

Antarctica21
Fly & Sail Expeditions



Explorers House

A private club for Antarctica21 guests

Last updated on January 9, 2024

Antarctica21

EXPLORERS

house



Explorers House is your gateway to
Antarctica and Patagonia, the beginning
of an experience like no other.

Explorers House

Explorers House is Antarctica21's new expedition center in Punta Arenas. It is a dedicated facility built from a converted heritage building, with an area of over 2,000 sq mt (21,500 sq ft) on two floors.

Here, our guests can prepare for their expedition by attending briefings, reviewing checklists, trying on expedition gear, practicing wearing a life jacket, and learning how to board a Zodiac.

They can also interact with our team and get answers to any questions they may have about their trip so they will be ready and confident when they arrive in Antarctica.





Explorers House Features

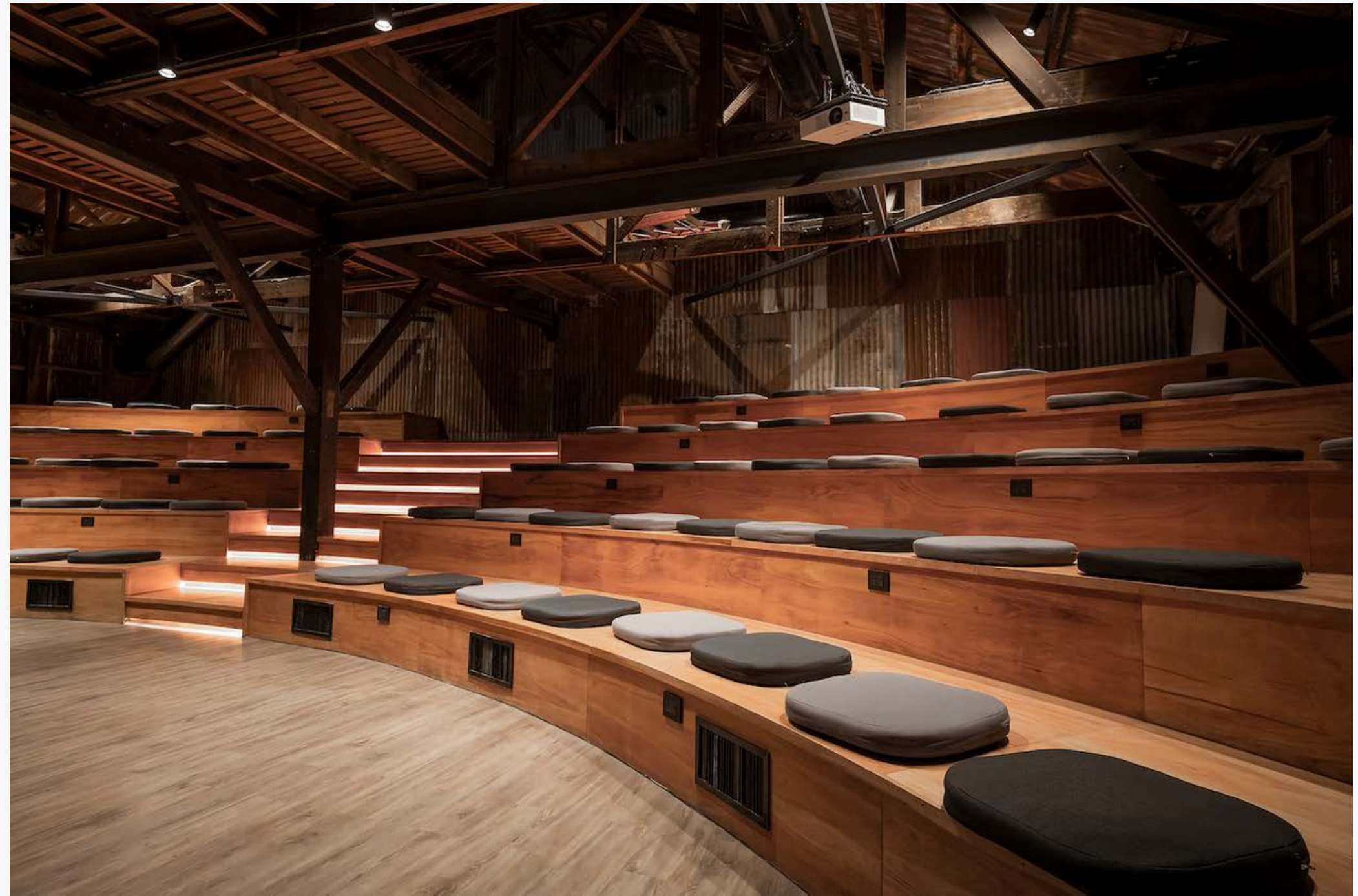
Explorers House also functions as an exclusive private club for Antarctica21 guests. It provides a modern environment where visitors can relax with a cup of coffee, review a wonderful collection of Antarctic books, and get to know their travel companions as excitement builds over the upcoming adventure.

Features include a reception area, an amphitheater-style presentation room, relaxing lounges, a library, a garden area, a gear rental and gift shop, a coffee station, interactive and live information touch screens, a bar, and food and drink services.



A21 • Explorers House

Touchscreens located on both floors offer guests rich and interactive content. They provide an opportunity to get more familiar with their next destination: Antarctica.



The amphitheater-style presentation room can host up to 100 guests for welcome talks and pre-departure briefing sessions.





Λ21 • Explorers House



Enjoy traditional Chilean dishes paired with wine during our welcome dinner at Explorers House.



Guests can relax in spacious areas, and enjoy a coffee or a drink.



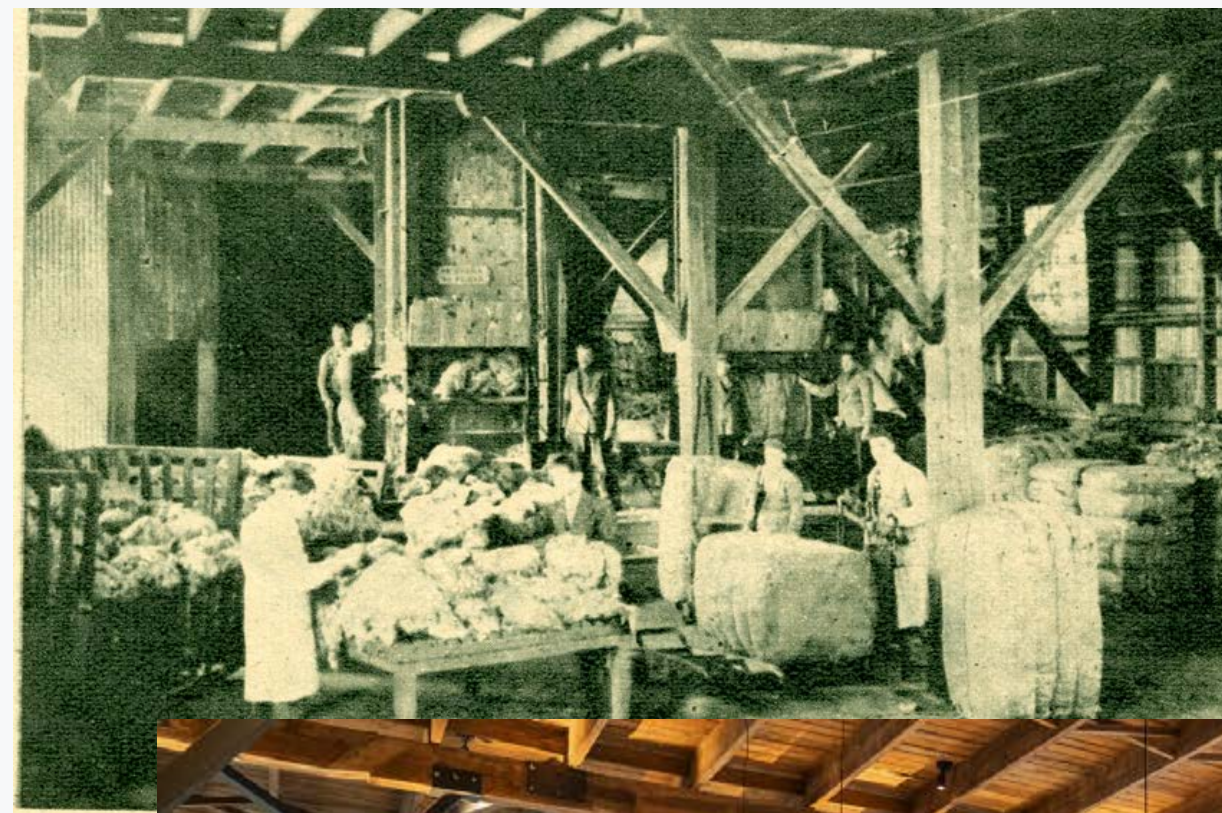
Browse over 100 specialized polar books before your expedition to Antarctica.

Explorers House History

Explorers House, formerly the Salles y Bianco Wool Warehouse, is a converted heritage *barraca* in Punta Arenas, historically processing and selling Patagonian wool and leather.

This early 20th-century storage barracks has two levels with spacious, well-equipped spaces made entirely of wood, supported by sturdy pillars and cross beams. Covered in corrugated iron sheets, it features a skylight along its peak for natural illumination and large windows on the northern and southern ends.

The framework of the original structure has been retained in its lanolin-stained, natural state as an homage to the history and people of the region. Some of the original machinery, including two large wool presses, have also been preserved and integrated in the design of the building.



Interview

Explorers House & Our Expedition Experience

Jaime Vásquez, President of Antarctica21, and Andrea Tellez, Manager of Explorers House, led the project taking Explorers House from an idea to reality.





What was the vision that led to the development of Explorers House?

Jaime Vásquez: The vision behind Explorers House was to create a welcome center to provide a more fitting and personalized experience for guests traveling with Antarctica21. This initiative stemmed from a desire to enhance the overall guest experience, aligning it more closely with the essence of what Antarctica21 offers.

Previously, we carried out our pre-departure processes at a hotel in Punta Arenas, with limited and busy public spaces. While the spaces were functional, they did not fully align with the inspiring, comfortable experience that Antarctica21 aims to deliver. With Explorers House, we sought to welcome our guests in a way that sets the stage for their Antarctic adventures. Explorers House serves functional hospitality needs but is also an inspiring retreat for our guests to relax in and feel at home as they await their departure.

What facilities and amenities does Explorers House offer that enhance the Antarctica21 experience?

Andrea Tellez: Explorers House functions as a private club for our air-cruise guests. It is a relaxed yet elegant environment for travelers to get ready for their Antarctic voyage. Travelers can arrive and immerse themselves in our space, learning about their destination and their upcoming expedition. Following long international and domestic flights, our guests are greeted by a welcoming reception and can unwind in a lounge with comfortable plush seating. We have a dining area serving local dishes during our welcome dinner, a library with books on Patagonia and Antarctica, and a gift shop for Antarctic gear and a carefully curated selection of wonderful souvenirs. The second floor features interactive touchscreens for educational content and an amphitheater for our briefing sessions. It's a space where discovery is waiting at every turn.

Guests can try on expedition gear, practice wearing a life jacket, and learn how to board a Zodiac, ensuring they are ready and confident for their Antarctic adventure. Guests can also meet the Antarctica21 team, review checklists, and get answers to any questions they might have about their trip.

What do you hope guests will feel or take away from their visit to Explorers House?

Jaime Vásquez: While Antarctica is the objective, Punta Arenas is the gateway. As we set the stage for what's to come in the White Continent, I would like guests to feel an appreciation for the rich heritage of this region. Having been raised in a sheep ranching family in Tierra del Fuego, the restoration of a century-old building in Punta Arenas, which was in a dilapidated state, holds deep significance for me. It's more than a business project for me; it's a personal journey. My aim is for guests to feel a sense of connection to my city and to Patagonia. They traveled a long way to get here. I want them to feel the rich history and culture of this area, intertwined with the exciting anticipation of their Antarctic expedition.

Andrea Tellez: At Explorers House, we want our travelers to feel at home in a cozy and private place. This quiet time in an exclusive space with soul is important. During the Age of Discovery, daring seafarers undertook long voyages to these remote lands. During the Heroic Age of Antarctic Exploration,

many important expeditions departed from Punta Arenas on the way to Antarctica. In this wonderful building full of character, we hope that modern-day explorers can connect with that heritage, thus enhancing their overall journey of discovery and appreciation of this remote corner of the world.

How do you view the importance of sustainability in this project?

Jaime Vásquez: Sustainability is a central pillar in all our projects. From the construction of Explorers House to the operations of Antarctica21, we focus on environmental consciousness. At Explorers House, we have incorporated several sustainable features designed to minimize its environmental impact and enhance energy efficiency. These include using sustainable building materials, energy-saving practices, and minimizing our environmental footprint, ensuring our operations are eco-friendly and responsible.

A large commercial solar panel system has been installed to harness solar energy. This is particularly efficient during the summer months when there's

ample daylight, helping to power the facility sustainably. The building features radiant floor heating systems powered by heat pumps. These systems utilize the stored solar energy, ensuring efficient and eco-friendly heating. The building has 18 cm of insulation, providing effective thermal protection. This approach helps maintain a comfortable interior temperature while minimizing energy loss.

Andrea Tellez: During the restoration and construction of Explorers House, sustainable materials and practices were employed. For example, the rusted metal sheets that made up the old structure's exterior have been preserved. They now add a unique look to the building, while modern, environmentally friendly materials were used for the new additions and renovations. Explorers House also includes collection tanks that gather rainwater from the roof. This collected rainwater is then used in the bathrooms, reducing the reliance on the city's water supply and conserving freshwater resources. These features demonstrate a commitment to sustainability and environmental responsibility in providing eco-conscious travel experiences.

EXPLORERS
house



Interview

Explorers House

Architecture & Design

Explorers House has been designed by a renowned Chilean team. The leading architect on the project is Pedro Kovacic, who, among other projects, led the conversion of the Singular Patagonia Hotel. The interior design is by Enrique Concha & Co., the studio that was also responsible for the interiors of Magellan Explorer.





What is the vision behind Explorers House?

Pedro Kovacic: The vision was to create a space that resonates with the spirit of exploration and respect for history. We wanted Explorers House to align with the journey Antarctica21 guests are about to undertake – a blend of discovery, respect for nature, and an appreciation of history. The project was not just a renovation. It was also about reviving a piece of Punta Arenas's heritage and making it a pivotal part of the modern Antarctic exploration experience.

Enrique Concha: From an interior design perspective, our vision was to craft an environment that complements the Antarctic experience with Antarctica21. We wanted the interiors to be a prelude to the adventure that awaits on Antarctica, infusing modern design elements with historical significance and elegance. The space is designed to be comfortable and stimulating, reflecting the unique blend of modern elegance and adventure that characterizes Antarctica21's expeditions.

Is Explorers House architecturally significant?

Pedro Kovacic: Explorers House is a unique blend of historical and contemporary architecture. Originally, it was a humble building, simple and quite basic. Over time, it served different purposes – from a wool storage facility to a hardware store depot. With this project, my objective has been to preserve the historical essence of the original building while ensuring compliance with today's building codes. We replaced the deteriorating wooden parts with metallic elements, such as braces and beams. In my view, it is this dialogue between the old and the new that makes Explorers House architecturally significant today.

What were the main challenges you faced during the construction of Explorers House?

Pedro Kovacic: One of the biggest challenges was integrating elements of the past with contemporary interventions. For example, we had to reconstruct the foundations, which involved cutting the pillars and adding metallic plates. It was a significant effort.

A21 • Explorers House

Enrique, how did your firm approach the interior design of Explorers House?

Enrique Concha: Our approach was to create a seamless connection between the interior design and the architecture. We were meticulous in selecting furniture and layout to ensure functionality and aesthetic harmony. Our choices respected the original wooden structure and the newly incorporated black metal framework. We focused on creating a sense of place that resonates with the spirit of Antarctica. The floor color recalls the hues of Antarctic icebergs. Every piece of furniture was carefully chosen to fit the space and the building's character. We have also added a touch of red, energizing the overall design and alluding to the cabin doors on Magellan Explorer.

How does Explorers House contribute to the overall experience of Antarctica21 guests?

Pedro Kovacic: Explorers House is more than just a starting point for Antarctica21 guests. It's an introduction to the Antarctic experience. The building

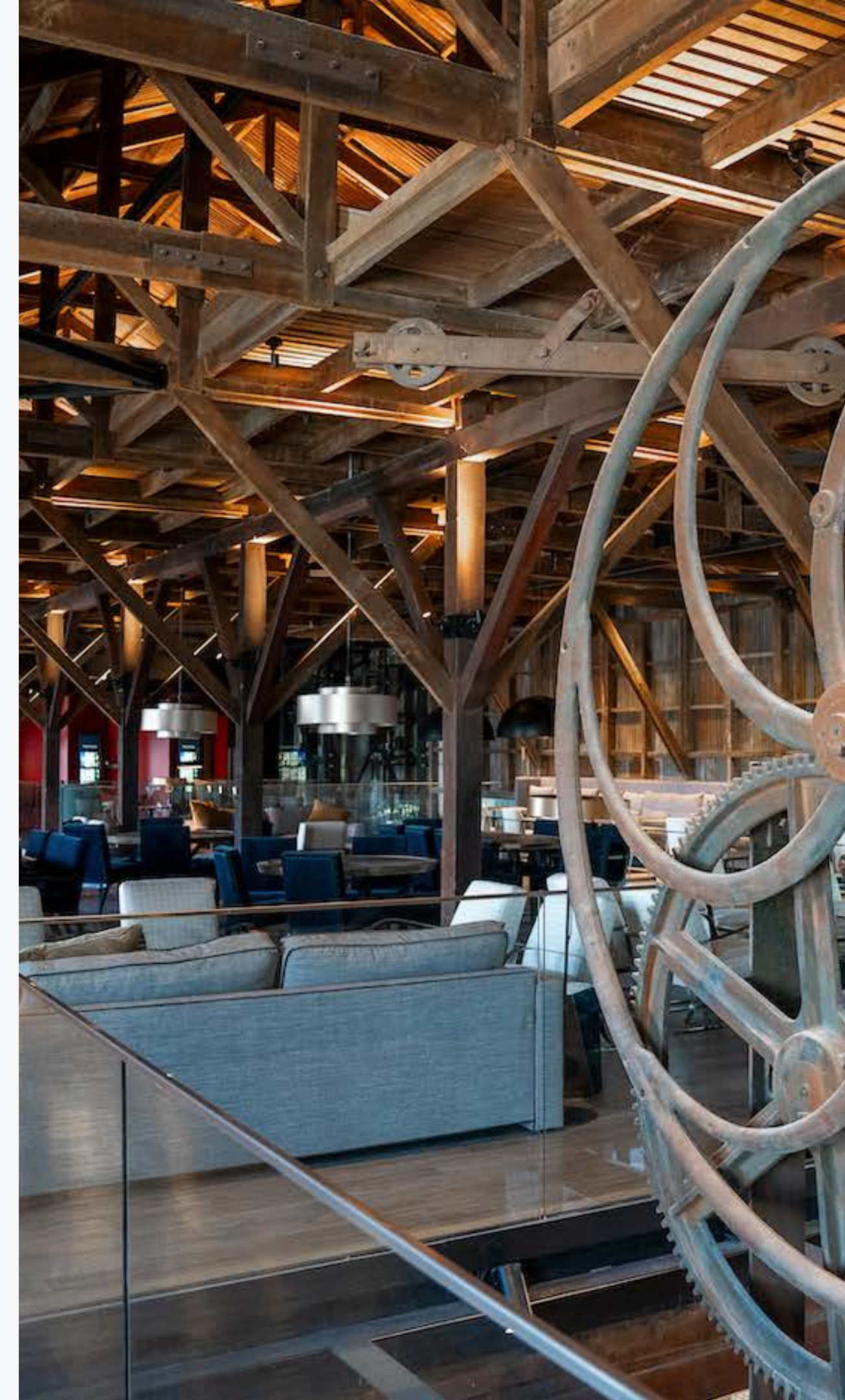
itself, with its rich history and modern adaptations, mirrors the journey our guests embark on – a blend of adventure and comfort, the old and the new.

Enrique Concha: It sets the tone for the guests' journey. The design, while echoing the harsh yet beautiful Antarctic environment, offers comfort and luxury. It's a place where guests can gather, share stories, and prepare for their adventure, all while being surrounded by a design that tells a story of its own.

What will guests take away from their visit?

Pedro Kovacic: I hope they sense the deep connection between the past and present and appreciate the efforts to preserve history while adapting to modern needs. The building stands as a testament to the respect we hold for our architectural heritage and our innovative spirit.

Enrique Concha: I want guests to feel inspired and moved by the space. The goal was to create an environment that not only serves as a gateway to their Antarctic journey but also leaves a lasting impression of beauty and thoughtfulness in design.



Contact us
Your questions are welcome

For further information and inquiries, you can contact our Reservation and Customer Service Team.

Tel: +56 (2) 2231 8142

Toll-free USA and Canada: +1 (877) 994-2994

Email: sales@antarctica21.com

Our office hours:

Monday to Friday

From 8:30 am to 6:00 pm · Santiago, Chile time

www.antarctica21.com

Antarctica21

Fly & Sail Expeditions

Visit us at antarctica21.com

ANTARCTICA21



Last updated on January 9, 2024