

ANTARCTIC & SUB-ANTARCTIC SEA VOYAGES

2022·23 SEASON

Antarctica21

Fly & Sail Expeditions




Tierra del Fuego (Ushuaia) | Cape Horn |
The Falkland Islands (Islas Malvinas) |
South Georgia | Antarctic Peninsula

ANTARCTIC PENINSULA AND SOUTH SHETLAND ISLANDS



SUMMARY

5 Discover Antarctica, Cape Horn, and the Southern Ocean	16 DATES & PRICES	27 PLANNING YOUR TRIP
6 Traveling on our Small Expedition Ship	17 Dates & Prices	28 Arrival & Departure Details
8 Our Company	18 Inclusions & Exclusions	29 Flight & Hotel Packages
9 ITINERARIES	19 EXPERIENCES & ADVENTURES	30 Packing for Your Trip
10 Ushuaia, Cape Horn & Falklands (Malvinas)	20 Explorers House: Antarctica21's Expedition Centre	31 Useful Tips
11 Falklands (Malvinas) & South Georgia	22 The Antarctica21 Expedition Experience	32 Important Trip Details
12 Falklands (Malvinas), South Georgia & Antarctica	23 Sea Kayaking	35 TERMS & CONDITIONS
13 VESSEL	24 Hiking & Snowshoeing in Antarctica	
14 Magellan Explorer	25 Life on Board	
	26 Education Program	

A full-page photograph of an Antarctic landscape. In the foreground, dark, calm water is filled with numerous icebergs of various sizes. A prominent, large iceberg on the right has a unique, sculptural shape with a large circular hole through its center. To its left is another large, angular iceberg. The background features a massive, layered ice shelf or glacier wall, showing distinct horizontal bands of white and blue ice. The sky is a pale, hazy blue.

Travel with Antarctica21 for a transformative,
once-in-a-lifetime experience

**Breathtaking landscape
in Antarctica**

© R. Moraga

Birdwatching on the Falkland Islands (Islas Malvinas)

© R. Moraga





DISCOVER ANTARCTICA, CAPE HORN, AND THE SOUTHERN OCEAN

Cape Horn

This remote island at the tip of South America is a rare destination for the adventurous traveler. A visit here is the stuff of legends.

The Southern Ocean

The remote islands of the Southern Ocean are magical places that will greet you with their awe-inspiring beauty. In the Falkland Islands (Islas Malvinas) see peaceful bays rich in wildlife and learn about the daily life of the people who make this remote outpost of British culture home. In South Georgia, be amazed by sharp snowy peaks that jut out of the sea and take in some of the largest wildlife colonies in the world.

Antarctica

A land that holds 90% of Earth's ice, Antarctica stuns visitors with its awe-inspiring beauty. Enjoy peaceful bays dotted with colossal icebergs; cruise along deep fjords and see massive glaciers.

Adventure

Feel the spray of seawater on your cheeks as you cruise in a Zodiac boat to shore. Follow in the footsteps of early explorers as you hike with Antarctica21. Join our optional Sea Kayaking and Hiking & Snowshoeing programs in Antarctica.

Wildlife

Penguins, whales, seals, and seabirds congregate in the Southern Ocean during the austral summer. Present in large numbers, you will move along in their world, finding endless inspiration for photographs.

Memories

Setting foot on these distant lands is a privilege and an honor. You will bring home unforgettable tales, and your journey will arouse the curiosity and admiration of your friends and family.

TRAVELING ON OUR SMALL EXPEDITION SHIP

Our Antarctic and Sub-Antarctic sea voyages are high-end wilderness adventures, not cruises. Your home away from home, a small ship that allows you to explore remote and beautiful lands in comfort.

Small Ship Access

Feeling more like private yachts than cruise ships, our small expedition vessel gives you privileged access to Antarctica and the Southern Ocean, taking you where larger ships cannot. With a smaller number of passengers, disembarkation is fast and efficient, so you spend time exploring, not waiting.

Unparalleled Value

Your expedition will be led by an expert team of at least 12 polar guides. Our sea voyages have one of the highest staff-to-traveler ratios in the industry and offer an extensive list of trip inclusions for you to enjoy. Our rates start at only \$4,995 per person, making these wilderness expeditions ones of extraordinary value.

KEY BENEFITS



Size: Enjoy a small-ship, yacht-like experience



Speed: Fast landings, more time exploring



Value: The best value at the most affordable prices



Magellan Explorer sailing
through the icy waters of Antarctica

© S. Walser



OUR COMPANY

Antarctica21 was founded in 2003 by people who believed there was a better way to travel to Antarctica. Since then, our company has been providing quick, intimate expeditions to the seventh continent and beyond.



Our Style and Philosophy

Antarctica21 is a boutique specialist focused on the design and delivery of adventurous yet comfortable small-scale expeditions. We aim to offer guests the perfect balance between active exploration and high-quality, personalized hospitality.

Our People

Our international team of experienced sea captains, expert polar guides, academics, and seasoned travel professionals create the Antarctica21 experience. With passion, creativity and dedicated teamwork, each expedition is handcrafted, unique and personal.

Commitment

Antarctica21 is a leader in the fast-growing field of Antarctic and Sub-Antarctic tourism, constantly developing and innovating our programs and operations. As a member of the International Association of Antarctica Tour Operators (IAATO), we consider every detail of our planning and operations with the goal of minimizing our environmental impact.



ITINERARIES

A scenic photograph of a rocky, moss-covered cliff overlooking the ocean. In the foreground, three Black-Browed Albatrosses are prominent: one stands on the left facing the camera, while two others are on the right, one with its wings partially spread. Several other albatrosses are visible further up the cliff and in the air. The ocean is a vibrant turquoise with white foam from the waves crashing against the base of the cliff. In the background, a large, dark, forested hill rises under a cloudy sky. The word 'ITINERARIES' is printed in large, white, sans-serif capital letters across the top of the image.

Black-Browed Albatross in
the Falkland Islands (Islas Malvinas)

© R. Moraga

USHUAIA, CAPE HORN & FALKLANDS (MALVINAS)

8 DAYS / 7 NIGHTS

Itinerary

- A chance to visit Cape Horn
- The Falkland Islands (Islas Malvinas)
- Combines perfectly with a visit to Patagonia

Day 1 / Ushuaia, Embarkation

Your journey begins at the pier in Ushuaia, Argentina, with embarkation between 7 and 8 PM. Board your ship and sail along the Beagle Channel towards Puerto Williams, Chile, the southernmost town in the world, where the ship will clear formalities to approach Cape Horn.

Day 2 / Cape Horn

After an overnight crossing of Nassau Bay, you awake in full view of legendary Cape Horn! Weather permitting, board a Zodiac and be one of the few privileged adventurers to step foot on this famous and rarely visited island. Sail and explore the area in depth before setting course north towards the Falkland Islands (Islas Malvinas).

Day 3 / At Sea

As you sail through the South Atlantic en route to the Falkland Islands (Islas Malvinas), attend an engaging program of informative presentations. In the company of expert guides, watch for bird and marine life from the lounge or from the outside decks. You may spot magnificent seabirds, such as albatrosses and petrels, as well as different species of whales.

Day 4 / West Falklands (south)

Ruggedly beautiful and remote, places such as New Island, Weddell Island or West Point are located at the extreme west of the Falklands' archipelago. See dramatic cliffs contrast with sheltered sandy bays and natural harbors. These areas host a large concentration of wildlife with lots of diversity. Some of the best wildlife experiences are just a short distance from the settlements.

Day 5 / West Falklands (north), Carcass & Saunders

Named after HMS Carcass, which visited in the late 18th century, the terrain is varied with rocky ridges, steep cliffs, open plains, white sand beaches and coves. Saunders is the second largest offshore island

and has very varied terrain, from rocky hills to sweeping shorelines. It is an important natural habitat for birds and offers exceptional wildlife viewing opportunities. All five breeding species of penguin can be spotted here along with black-browed albatross and many other birds.

Day 6 / The Falkland Sound

You cruise down the Falkland Sound, sightseeing its rugged and untouched landscapes. We immerse ourselves in the past and recent history of the islands. You visit settlements and meet the locals, getting to know the culture of farming families. As we stop at sites that were active battlefields during the 1982 conflict, our historians introduce us to regional geopolitics.

Day 7 / Port Stanley

Join our expedition team on guided walking tours in town or to Gipsy Cove. Or take the option to explore on your own and absorb the atmosphere, grabbing lunch at the local pub, visiting the maritime museum, the church, hunting for souvenirs or walking down Ross Road, paying tribute at the war memorials at the waterfront.*

Day 8 / Disembarkation

Transfer to the airport at Mt. Pleasant will be provided from the ship according to the scheduled flight.



OPERATED ON

Magellan Explorer

*Note: Small-group day tours and half-day tours can be purchased on board the ship to visit Volunteer Point (by 4x4 vehicle or helicopter), battlefield tours (by 4x4 vehicle), and others. Options will be presented on board.



© P. Stone

FALKLANDS (MALVINAS) & SOUTH GEORGIA

15 DAYS / 14 NIGHTS

Itinerary

- A wilderness experience in the Southern Ocean
- The Falkland Islands (Islas Malvinas)
- In-depth visit to South Georgia

Day 1 / Port Stanley, embarkation

Pick up at the airport in Port Stanley, town visit, and embarkation.

Day 2 / Saunders Island, Carcass Island

During a morning visit to Saunders Island, we enjoy the long white-sand beach. A wilderness experience, the main attractions there are rockhopper penguins, nesting black browed albatross, and sub-Antarctic gentoo penguins. In the afternoon, we visit Carcass Island. There is an option for an easy hike to the settlement, bird watching, and a typical Falklands tea experience.

Day 3 / New Island, Weddell Island

We visit New Island, a classic West Falklands experience, with albatross and penguin colonies. Depending on local conditions, in the afternoon, we could visit Weddell Island.

Day 4 / Bleaker Island

Morning landing at Bleaker Island. This is a natural reserve with a famous bird area featuring a large variety of birds. In the afternoon, we head to South Georgia.

Day 5-6 / At Sea

As we sail toward South Georgia, attend an engaging program of lectures and presentations. In the company of expert guides, watch for wildlife from the lounge or from the outside decks. You may spot magnificent seabirds, such as albatrosses and petrels, as well as different species of whales.

Day 7 / Elsehul Bay

Depending on sea conditions over the previous days, arrival is planned for the afternoon. Provided we receive approval from the South Georgia government, we plan to do an evening Zodiac cruise at Elsehul Bay.

Day 8 / Grytviken, Fortuna Bay

Our first landing is at Grytviken. We clear Customs and then visit the historical site, with the museum and Ernest Shackleton's grave. In the afternoon, we land

at Fortuna Bay / Stromness to see king penguins. Here we learn more about Shackleton and his expedition. There is also an optional 2-3 hour "Shackleton walk".

Day 9 / Gold Harbour, Cooper Bay

In the morning, we plan a landing at Gold Harbour. This is a spectacular location with king penguins, elephant seals and hanging glaciers. There are also sooty albatrosses here. In the afternoon, we visit Cooper Bay to see macaroni penguins during a Zodiac cruise.

Day 10 / St Andrews Bay, Ocean Harbour

St Andrews Bay is the destination of our morning excursion. We see the largest king penguin colony, and elephant seal bulls. In the afternoon, we plan a Zodiac cruise and landing at Ocean Harbour. The highlights here are a shipwreck and remains of the whaling industry.

Day 11 / Prion Island, Salisbury Plain

In the morning, we plan to visit Prion Island to see the nesting wandering albatross. In the afternoon, we head to Salisbury Plain for more king penguins and stunning landscapes.

Day 12-14 / At Sea

As we make our way back to the Falkland Islands (Islas Malvinas) our program of lectures and presentations continues.

Day 15 / Port Stanley, Disembarkation

Upon arrival at Port Stanley, we disembark and transfer to the airport for the ongoing flight.



 OPERATED ON

Magellan Explorer



FALKLANDS (MALVINAS), SOUTH GEORGIA & ANTARCTICA

19 DAYS / 18 NIGHTS

Itinerary

- A wilderness experience in the Southern Ocean
- The Falkland Islands (Islas Malvinas)
- Visit to South Georgia
- Explore the Seventh Continent

Day 1 / Port Stanley, embarkation

Pick up at the airport in Port Stanley, town visit, and embarkation.

Day 2 / Saunders Island, Carcass Island

During a morning visit to Saunders Island, we enjoy the long white-sand beach. A wilderness experience, the main attractions there are rockhopper penguins, nesting black browed albatross, and sub-Antarctic gentoo penguins. In the afternoon, we visit Carcass Island. There is an option for an easy hike to the settlement, bird watching, and a typical Falklands tea experience.

Day 3 / Bleaker Island

Morning landing at Bleaker Island. This is a natural reserve with a famous bird area featuring a large variety of birds. In the afternoon, we head to South Georgia.

Day 4-5 / At Sea

Day 6 / Elsehul Bay

Evening Zodiac cruise at Elsehul Bay, subject to crossing and permits from the South Georgia government.

Day 7 / Grytviken, Fortuna Bay / Stromness

Morning landing at Grytviken, we will clear Customs here and then visit the historical site, with the museum and Ernest Shackleton's grave. In the afternoon, landing at Fortuna Bay / Stromness. We will see king penguins and learn more about Shackleton and his expedition. There is an optional 2-3 hour "Shackleton walk".

Day 8 / Salisbury Plain, Prion Island

Morning visit to Salisbury Plain for more king penguins and stunning landscapes. In the afternoon,

visit Prion Island to see the nesting wandering albatross.

Day 9 / St Andrews Bay, Cooper Bay

Morning visit to St Andrews Bay. We will see the largest king penguin colony, and elephant seal bulls. In the afternoon, visit Cooper Bay to see macaroni penguins on a Zodiac cruise.

Day 10-11 / At Sea

Day 12 / Elephant Island

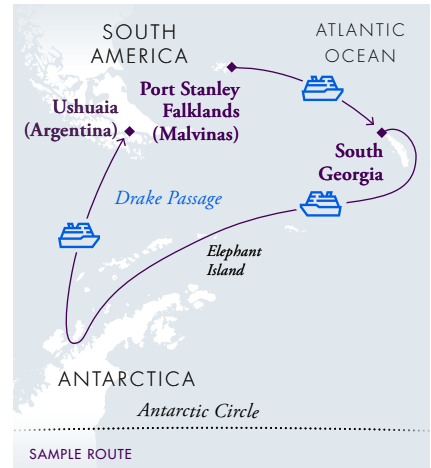
In the afternoon, we will see Elephant Island. While a landing here is very unlikely, we will see the island from the ship or, if sea conditions allow, from a Zodiac.

Day 13-16 / Antarctic Peninsula, South Shetland Islands

Cruise along the Antarctic Peninsula and among the South Shetland Islands, visiting sites in the Antarctic Sound and in the Gerlache Strait. The voyage may include visits to sites such as Gourdin Island, Brown Bluff, Half Moon Island, Deception Island, Wilhelmina Bay, the Lemaire Channel, Cuverville Island, the Melchior Islands or other magnificent places.

Day 17-18 / At Sea

Day 19 / Arrival in Ushuaia and disembarkation



 OPERATED ON

Magellan Explorer



© M. Urra

VESSEL



View of Magellan
Explorer in Antarctica

© A. Rekus

MAGELLAN EXPLORER

Innovative Technology / Modern Design

Magellan Explorer is a new and modern expedition vessel custombuilt for our Antarctic and sub-Antarctic expeditions. The ship was constructed in Chile to the latest Polar Code specifications.

Magellan Explorer has seven categories of accommodation, including dedicated single cabins. All cabins except Porthole cabins feature private balconies. The majority of double cabins have two twin beds that can be configured as one king-size bed. Some double cabins can only be configured with a queen-size bed. All cabins feature a wardrobe, individually controlled heating system, a sitting area, and a private bathroom with shower.

The ship features a glass-enclosed observation lounge and presentation room with state-of-the-art audio-visual equipment, a spacious and stylish dining room, a well-stocked bar, a library, a meeting room, a gym, a sauna, and a medical clinic. The forward-facing observation deck leads to the bow of the ship, which is accessible to guests to offer proximity to marine wildlife. The ship has a fleet of 10 Zodiac boats that are well suited for disembarking and wildlife watching.

The fitness centre aboard Magellan Explorer has been designed and built by the professionals at Anytime Fitness, the world's only fitness company with boutique gyms in all seven continents. For more information, see anytimefitness.com.

Specifications

Passengers:
96 maximum

Expedition Staff & Crew:
60

Lifeboats:
2, fully enclosed, capacity of 160 (in addition to 8 life rafts, capacity of 160)

Length:
90.7 m

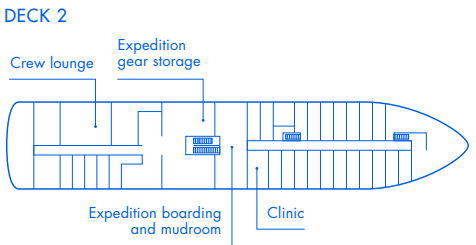
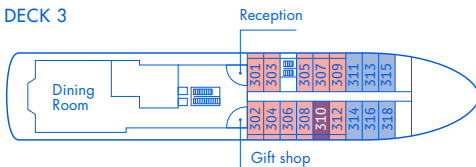
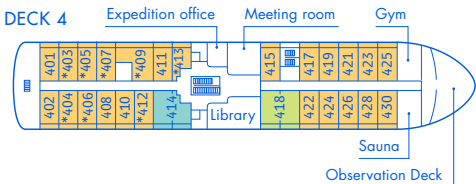
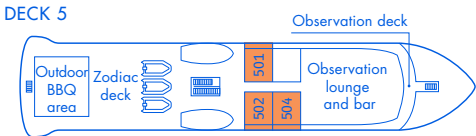
Breadth:
16.2 m

Draft:
4.3 m

Propulsion:
Diesel engines, 3,440 kW

Ice Class:
LR PC6

Cruising Speed:
14 knots in open water



* Only available with queen-size bed

Cabins

Category	Average size	Details
Single Cabin	210 sq. ft. 19 sq. m	Cabin with sitting area and balcony
Grand Suite	480 sq. ft. 44 sq. m	Two-room suite with sitting room, balcony and bedroom
Penthouse Suite	360 sq. ft. 33 sq. m	Two-room suite with sitting room, balcony and bedroom
Deluxe Veranda Cabin	240 sq. ft. 22 sq. m	Cabin with sitting area and balcony
Veranda Cabin	210 sq. ft. 19 sq. m	Cabin with sitting area and balcony
Porthole Cabin	200 sq. ft. 18 sq. m	Cabin with sitting area and porthole
Triple Suite	480 sq. ft. 44 sq. m	Suite with two bedrooms, balcony, and sitting area

[← Back to summary](#)





DATES & PRICES



A whale feeding on abundant
krills in Antarctica

© D. González

DATES & PRICES

Aboard Magellan Explorer

Code	Start	End	Days/ Nights	Itinerary	Prices (USD)								
					Triple	Porthole	Veranda	Deluxe Veranda	PH Suites	Grand Suite	Single	KAY	HS
MAG02-TF	September 24, 2022	October 1, 2022	8/7	Ushuaia, Cape Horn & Falklands (Malvinas)	\$7,995	\$4,995	\$5,595	\$5,995	\$6,995	\$11,995	\$9,995	—	—
MAG03-FS	October 1, 2022	October 15, 2022	15/14	Falklands (Malvinas) & South Georgia	\$15,890	\$9,990	\$11,495	\$11,990	\$13,990	\$23,890	\$21,266	—	—
MAG04-FS	October 15, 2022	October 29, 2022	15/14	Falklands (Malvinas) & South Georgia	\$15,890	\$9,990	\$11,495	\$11,990	\$13,990	\$23,890	\$21,266	\$895	—
MAG05-CH	October 29, 2022	November 16, 2022	19/18	Falklands (Malvinas), South Georgia & Antarctica	\$22,995	\$14,995	\$16,795	\$17,995	\$19,995	\$25,495	\$29,995	\$895	Available

Deposit

An initial deposit of \$3,000 USD per person is required to book a cabin, except for Ushuaia, Cape Horn and Falklands (Malvinas), where the deposit is \$1,500 USD per person.

The balance is due in full 120 days prior to departure. Payments can be made by wire transfer, PayPal, or by major credit card. Wire transfer costs are to be borne by the sender. Payments by PayPal and credit card are subject to a 2.5% fee (however, the 2.5% fee is not charged on the deposit).

Children

Children are admitted from the age of 12 years if accompanied by an adult who will take responsibility and sign a waiver.

Single Travelers

Single travelers can choose between:

- Booking a dedicated Single Cabin. No supplement is applied for single use of dedicated Single Cabins.
- Booking a Twin Cabin for single use. An 85% supplement will be added to the rate per person when booking in a limited number of Porthole and Veranda Cabins on Magellan Explorer. A 100% supplement applies when booking all other categories.

- Sharing a cabin with another passenger of the same gender. This is available on Magellan Explorer in Porthole and Veranda Cabins. Antarctica21 will take care of finding the matching companion.

Note: Single travelers who use CPAP machines or other assistive devices, as well as those who have conditions that can be disrupting to others (loud snoring, sleepwalking etc.) can only book their expedition in a Single Cabin or in a Twin Cabin for single use. They cannot book on a twin-share basis.

Charters and Reservations by Groups

Full-ship charters and reservations made by and for groups of 8 travelers or more are subject to payment and cancellation conditions to be agreed by contract.

For complete Terms and Conditions, please see pages 35-37.

A21 LOYALTY BENEFIT

For our returning travelers, the A21 Loyalty Benefit gives you a 5% reduction on your next trip, including our Antarctic Air-Cruises. The reduction applies to all repeat travel with Antarctica21.

KAY = Sea Kayaking in Antarctica, the Falklands (Malvinas), and South Georgia. We recommend booking the Sea Kayaking program upon reservation of your trip.
HS = Hiking and Snowshoeing in Antarctica. Available for booking on board the ship at \$85 per person, per excursion.

Note: Rates are per voyage and per person in US dollars based on the selected cabin and occupancy.

INCLUSIONS & EXCLUSIONS



© R. Moraga

Included in the Rate

- Comprehensive pre- and post-voyage information material.
- For guests visiting Punta Arenas, special access to Explorers House.
- Ship cruise as indicated in the itinerary corresponding to each expedition.
- Daily buffet breakfast and lunch on board ship offering a wide choice of dishes.
- Daily served dinner on board ship offering a choice of three main courses.
- Wine, beer, juice, and soft drinks served with lunch and dinner on board ship.
- Coffee, tea, chocolate, cappuccino, water and snacks on board ship throughout the expedition.
- Loan of waterproof boots for landing.
- All guided shore excursions.
- Presentations and entertainment on board.
- Landing fees and IAATO passenger fee.

Specifically not Included in the Rate

- Flights, accommodation, meals, excursions and transfers other than those included in the itinerary corresponding to each voyage.
- Beverages purchased at the ship's bar.
- Personal travel insurance.
- Extra expenses (communication, laundry, souvenirs, etc.).
- Gratuities.
- Visas for Chile, Argentina, and/or the UK, passport expenses, and any arrival and/or departure tax, if applicable.

EXPERIENCES & ADVENTURES



Zodiac cruising

© V. Ibáñez

EXPLORERS HOUSE

Antarctica21's Expedition Center

An expedition with Antarctica21 is an experience like no other. If during your trip you will visit Punta Arenas, you can visit our expedition center.

Explorers House offers an exclusive facility where you can interact with our team, review checklists, and get answers to any questions you may have about your trip, so you will be ready and confident when you arrive to your ship.

Explorers House also functions as our own private club. It provides a modern environment where you can relax with a cup of coffee, review a wonderful collection of books, and get to know your travel companions as excitement over the upcoming adventure builds.

Explorers House was designed by renowned architects and was built using green building practices. It features a commercial solar panel system for the production of electricity and heat.





Explorers House. Image for illustration purposes only – Actual space and furniture may vary.

THE ANTARCTICA21 EXPEDITION EXPERIENCE



Mariano Curiel
Director of Expedition Operations

Mariano Curiel, Director of Expedition Operations, talks about the expedition experience in Antarctica and beyond.

What makes a trip an “expedition”?

The word expedition refers to a journey undertaken by a group of people with a particular purpose, such as exploration or research. With a lot of preparation and just as much flexibility, we lead expedition travelers to Antarctica and the sub-Antarctic islands to deepen their understanding of these remote and otherworldly places.

What surprises our travelers the most?

In my experience, the biggest impact comes from being exposed to such majestic expressions of nature. In the remote and extreme Antarctic and sub-Antarctic environment, travelers see and feel things that go beyond what they know and are used to in their daily lives. It's the same planet but it feels different. For many, it is a life-changing experience.

How do you put together the expedition team?

Members of our expedition team must be able to perform at the highest level in extreme conditions, for extended periods of time. Our mission is to connect our guests to the places we explore. To become that link, the team needs hard technical skills and experience, but also empathy, which allows them to feel and understand the emotions of our guests. We focus on building diverse teams in terms of gender, nationality, skills, backgrounds etc. Finally, we look for people who feel deep respect for the Antarctic environment. A team needs to be confident in their plans but ultimately humble to the forces of nature. It's a unique profile we look for.

We only run small-scale trips, with a maximum of 96 guests for our Antarctic and sub-Antarctic sea voyages. How does that shape the travel experience?

It gives us several advantages. To begin with, the connection to the places we visit is qualitatively different: less noise, less distraction, a more intimate experience. Then, there is our flexibility: in extreme environments the only guarantee is that there are no guarantees, and that plans will have to change. Our small scale affords us a lot of flexibility, which is a huge operational advantage. It results in better daily routines. But probably the most important point is that we are able to establish a personal connection with our guests. We speak with them, we listen, we share, we find out what they are experiencing during their trip. That gives us a chance to adapt our plans so that our guests are not simply “passengers” but become active participants in their trip.



SEA KAYAKING

Experience Antarctica and sub-Antarctic destinations from the unique vantage point of a sea kayak. The majestic landscape, the icebergs, and the wildlife look different as you paddle quietly through the icy waters.

The Program

The sea kayaking program is an optional small-group experience limited to a maximum of 10 participants. The group enjoys multiple excursions throughout the voyage, under the guidance and leadership of an experienced Kayak Master.

Every day in Antarctica, the Falklands (Malvinas), and South Georgia, your Kayak Master will work with the Expedition Team to look for the best kayaking opportunities based on suitable and safe weather conditions. The group will be supported by a dedicated safety Zodiac. Each kayaking excursion will be approximately one and a half hours. The Kayak Master will strive to offer some time at the landing site so you can also explore on land.

To take part in the kayaking program you must have previous experience and must know how to swim. The minimum age for participation is 16 years. Space is limited. We recommend booking the Sea Kayaking program upon reservation of your expedition.

For complete details please review the “Sea Kayaking Terms and Conditions” detailed in the “Terms and Conditions” section.

\$895 USD Per Person

Notes: Sea Kayaking is offered as a full program of excursions delivered to the same group of participants. It is not possible to join individual, one-off kayaking excursions, nor to rotate participation among family members or groups of friends traveling together.

Payment of the sea kayaking participation fee is due at time of reservation. In the case of cancellation 120 days or more prior to departure, Antarctica21 will refund 50% of the participation fee. In the case of cancellation 119 days or less prior to departure, there will be no refund.



HIKING & SNOWSHOEING IN ANTARCTICA



See more of the Antarctic landscape with our Hiking & Snowshoeing program. Excursion locations are selected for their scenic appeal and will provide unique vantage points for your photographs.

The Program

The Hiking & Snowshoeing program is an optional small-group experience that is offered on board the ship as a one-off excursion. Groups are limited to 12 participants and are led by a Hiking and Snowshoeing Guide.

Every day you are in Antarctica, the Hiking and Snowshoeing Guide will work with the Expedition Leader to look for the best hiking or snowshoeing opportunities within the trip's schedule, based on suitable and safe weather conditions. Each excursion will be approximately one and a half hours in duration. Depending on the conditions of the terrain, some excursions may require the use of snowshoes and/or trekking poles, which are provided by Antarctica21. Participants can select the excursions they want to join, paying a per-excursion fee. The activity can be booked and paid on board the ship.

To take part in the Hiking & Snowshoeing program you do not need previous experience. However, your level of physical fitness should be good. Minimum age for participation is 12 years.

For complete details please review the "Hiking and Snowshoeing Terms and Conditions" detailed below in the "Terms and Conditions" section.

\$85 USD Per Person, Per Excursion

Note: The Hiking & Snowshoeing program is only offered in Antarctica on our Falklands (Malvinas), South Georgia and Antarctica Expedition.

LIFE ON BOARD

Sandra Walser, Lead Cruise Manager, talks about the experience aboard our expedition ships.

What is life like on an Antarctica21 ship?

The ship is our base, a welcoming place to return to after our excursions. Our goal is to make it feel like your home away from home. We deliver a boutique hospitality experience that is personal, comfortable, and flexible. You can enjoy the privacy of your cabin or you can socialize in the lounge; you can find a space for quiet contemplation in the library, or you can join fellow travelers on deck. Throughout the journey, our team interacts with guests, sharing their knowledge and keeping everyone briefed on the trip's progress.

What about the dining experience on board?

Onboard dining gives you a chance to get to know your travel companions and make new friends. With different sized tables and no pre-assigned seating, you can choose to sit privately or join a group; the choice is yours.

Our chefs care about taste and detail. In the remoteness of Antarctica and the sub-Antarctic islands, they may surprise you with a fresh sprig of rosemary as decoration. All meals offer a variety of choices, to appeal to many tastes, including several main courses and side dishes, salads, fruits, and pastries. A full selection of drinks is served by waitstaff. Beers and premium Chilean wines are included with lunch and dinner. Depending on cruising conditions, a barbecue on deck may be offered.

What is Magellan Explorer like?

At Antarctica21, we pride ourselves on offering expert and welcoming service on board our ships. You will enjoy an exciting expedition program and comfortable hospitality experience: briefings, presentations, social time in the lounge, access to the bridge, and daily cabin service are offered during your trip. In all cabins we provide a reusable water bottle, refreshing bath products, chocolates at turn down, and more.



© A.M. López

Magellan Explorer is a new vessel, with a modern design. It was purpose built for exploration of the polar waters. Nearly all cabins have a private balcony: you can wrap yourself in a blanket and sip a warm beverage as you enjoy views of your destination in complete privacy. The forward-facing observation deck leads to the bow of the ship, which is accessible to guests to offer proximity to marine wildlife. The ship has a fleet of 10 Zodiac boats that are well suited for disembarking and wildlife watching.

Our goal is to ensure that you enjoy a friendly atmosphere, comfortable cabins, and common areas with knowledgeable and helpful staff.



Sandra Walser
Lead Cruise Manager

EDUCATION PROGRAM

Antarctica21's education program is delivered under the banner of A21CONNECT, an overarching concept where education, experience, and science converge.

With A21CONNECT, opportunities for understanding and for gaining knowledge are weaved throughout your journey, with multiple touch points.

Our expedition team offers engaging presentations on board the ship and interpretation in the field. Additionally, there are a number of one-on-one moments throughout your journey, where conversations with team members build upon the experiences of the day, leading to contextualized



understanding. Thanks to the small-scale of our operation, those moments happen frequently: in the lounge, in the dining room, on deck, during a Zodiac cruise and on countless other opportunities. Finally, we offer interactive workshops where you can participate and learn: open discussions, photography workshops, citizen science programs that collect data in support of scientists around the world, and more.

Through A21CONNECT, Antarctica, a distant and mysterious region, is revealed in action.

Did you know? If you added up the total time spent in the polar regions by our expedition team members, it would amount to over a century!

ANTARCTICA21 WILDLIFE WATCH



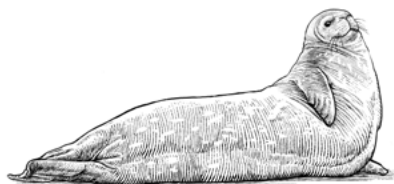
Penguins

There are eight penguin species in the Antarctic and sub-Antarctic regions, and many are easily spotted during our excursions. When swimming, penguins can reach speeds of up to 30 km/h (19 mi/h). They use their webbed feet as a rudder.



Whales

Many species of whales are attracted to Antarctic waters during the austral summer due to the abundance of food. The best time to see whales is between February and March, but sightings occur throughout the travel season.



Seals

Six species of seals live on the White Continent and surrounding waters. During a Zodiac cruise or a kayaking excursion, you may see some of these pinnipeds drifting on ice floes.



Seabirds

Penguins are not the only bird to look out for. Twenty-six species of birds are considered Antarctic species. Some of the favorites to spot include albatrosses, petrels, terns and Antarctic shags.

PLANNING YOUR TRIP



Enjoying the moment
in Antarctica

© J. Zaccaria

ARRIVAL & DEPARTURE DETAILS

Review the important details below about arrival and departure for your expedition, and make your travel plans accordingly. Ask your booking agent for assistance as needed.

Ushuaia, Cape Horn, & Falklands (Malvinas)

The “Ushuaia, Cape Horn, and Falklands (Malvinas)” itinerary starts at the pier in Ushuaia and boarding is between 7 PM and 8 PM. At 8 PM boarding will close. On the last day of the expedition, disembarkation in Port Stanley is planned in conjunction with the departing commercial flight to Punta Arenas/Santiago. Our team will transfer you to the airport in Port Stanley for the flight.

Falklands (Malvinas) & South Georgia

For “Falklands & South Georgia” itinerary, boarding on Day 1 in Port Stanley is planned in conjunction with the arriving commercial flight from Santiago/Punta Arenas. Our team will welcome you at the airport in Port Stanley and transfer you to the ship for embarkation. On the last day of the expedition, disembarkation in Port Stanley is planned in conjunction with the departing commercial flight to Punta Arenas/Santiago. Our team will transfer you to the airport in Port Stanley for the flight.

Falklands (Malvinas), South Georgia & Antarctica

For the “Falklands (Malvinas), South Georgia & Antarctica” itinerary, boarding on Day 1 in Port Stanley is planned in conjunction with the arriving commercial flight from Santiago/Punta Arenas. Our team will welcome you at the airport in Port Stanley and transfer you to the ship for embarkation. On the last day of the expedition, disembarkation in Ushuaia is planned in the morning. However, delays are possible. Antarctica21 strongly suggests that any travel plans made for the last day of the expedition do not start until the late afternoon.

Traveling to and from your Antarctic gateway

Flights between Ushuaia and Buenos Aires’ Ezeiza international airport and Aeroparque domestic airport are available daily on a few airlines.

Buenos Aires can easily be accessed with many international flights that land daily at Ezeiza international airport.

Flights to and from Port Stanley, in the Falkland Islands, are available through Latam Airlines on Saturdays, departing from/to Santiago and from/to Punta Arenas, Chile. Many international airlines land daily at Santiago’s Arturo Merino Benitez airport. Several airlines offer daily service between Santiago and Punta Arenas.

Overland transportation by bus between Ushuaia and Punta Arenas, a 12-hour journey, is also available.



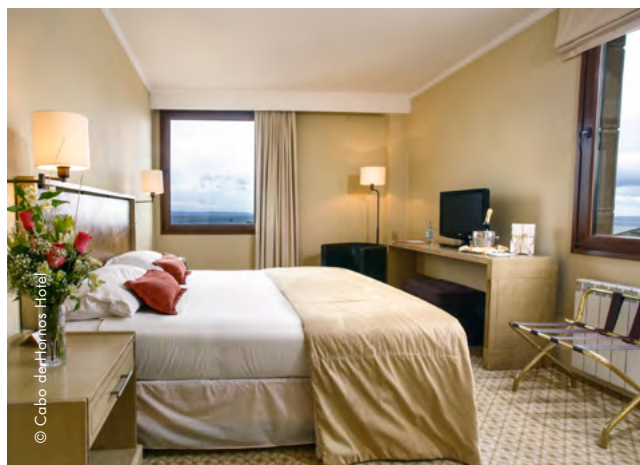
© R. Moraga

FLIGHT & HOTEL PACKAGES

For your convenience, on a request basis Antarctica21 can provide packages that include an airline ticket in economy class for the commercial flight from Santiago or Punta Arenas to Port Stanley, and/or return, and hotel accommodation in either Santiago or Punta Arenas. These packages are designed to facilitate your arrival to and departure from the Falklands (Malvinas).

Scheduled flights are operated on Saturdays by Latam Airlines. Please note that premium economy, business class, and first-class service is not available.

Please request further details at time of reservations.



PACKING FOR YOUR TRIP

Suggested Clothing

The average temperature in the Falkland Islands (Islas Malvinas) during the time of our visit is in the 5–10°C (40–50°F) range. The average temperature in South Georgia and in the Antarctic Peninsula area during the time of our visit is about 0°C (32°F), although sometimes it may feel a little cooler because of the wind chill factor. For this reason, it is best to wear several layers of light, warm clothing. The suggested clothing for Antarctica and the sub-Antarctic regions is very similar to that recommended for skiing: thermal underwear, a couple of warm and wicking mid layers, a windproof and waterproof jacket, plus pants as the outer layer. You will also need a hat, a scarf, waterproof and insulated gloves, and sunglasses with high UV protection. The pre-departure material provides further details. We also suggest packing comfortable clothes to wear on board, as well as rubber-soled shoes for walking around on the outside decks.



EXPEDITION JACKET

Our Signature Waterproof Expedition Jacket has been hand-selected for you as the perfect, technical outer shell for use on our expeditions.

The Antarctica21-branded BR2 Offshore Waterproof Jackets by MUSTO is breathable and features double cuffs, an adjustable hem, a double storm flap with a drainage channel over the zip, a high collar, and a roll away fluorescent hood. The sleeves are articulated to allow complete freedom of movement. The fleece-lined collar, hood, and pockets add warmth, while the prismatic reflectors provide extra visibility. The jacket is an outer shell to be worn over a few layers of warm clothing.

Only available in the Antarctica21 Gear Shop at www.antarctica21.com

Price \$349 USD

Note: Jacket model and price subject to change. Please review model and price at time of purchase.



USEFUL TIPS

Waterproof Boots

As most landings in Antarctica and the sub-Antarctic regions are “wet landings”, the best footwear is knee-high waterproof boots. You will not need to carry them with you since Antarctica21 will provide you with a pair of thermal rubber boots.

Face Protection

Good quality UV filtering sunglasses are essential. Glacier glasses have leather flaps at the sides to stop the light from passing through. Due to the high reflectance of UV radiation, you will also need good sun block lotion for your face (protection factor 30 and above) and lip balm.

Photography

To see the wildlife you should have a good pair of lightweight binoculars (the suggested magnification is 7× or 8×). If you are passionate about photography, do not forget a good zoom lens to shoot wildlife while avoiding close approaches. Also, take with you a good supply of memory cards and spare batteries since cold temperatures can reduce their lifespan. The recreational use of drones is not allowed during the expedition.

Visa Requirements

All travelers should check the entry requirements of the countries visited during their trip, based on their nationality. For trips that visit Argentina, Chile and United Kingdom territories, please consider the specific requirements.

Dietary Information

Requests regarding diets must be made on the Participation Form you receive after your booking confirmation. This information will be passed along to our staff so they can accommodate your needs while on your voyage. Note: due to the nature of our expeditions and the kitchens onboard the ships, Kosher and vegan meals cannot be accommodated.



IMPORTANT REMINDERS

- Submit your participation form 120 days prior to your trip
- Book flights according to the required arrival and departure times
- Purchase travel insurance, including medical evacuation coverage
- Review the current Travel Requirements on www.antarctica21.com/travel-requirements/
- Review the clothing and gear requirements
- Check the validity of your passport and obtain any required entry visas

IMPORTANT TRIP DETAILS

The Nature of Expedition Travel

Our expeditions are suitable for adventurous travelers who enjoy full mobility and reasonably good health. Expedition travel to Antarctica and the sub-Antarctic regions requires flexibility and adaptation to ever-changing circumstances.

Your Travel Companions

Antarctica21 offers its expeditions worldwide. Each year we welcome travelers from over 40 different countries. They may travel alone, as a family, or as part of a group. While some of your traveling companions may speak different languages and have different customs, they will share your passion for adventure and interest in the natural world.

Participation Form

Participants are required to fill out and sign an on-line Participation Form, and to return it to Antarctica21 at least 120 days prior to departure. Based on the medical information provided in the form, Antarctica21's Medical Director may request a medical certificate. All participants 75 years of age and older must submit a medical certificate.

Medical Insurance

Antarctica21 requires participants to be adequately covered by a travel insurance policy that covers aero-medical evacuation from any of your destinations as a result of a medical emergency during the trips, including emergencies related to pre-existing health conditions.

Cancellation Insurance

Antarctica21 strongly urges participants to be adequately covered by trip cancellation and interruption insurance.

Itinerary

Every effort will be made to adhere to the planned program. However, with this type of adventurous travel, changes to the itinerary may occur due to severe and changeable weather. We need to emphasize the fact that weather conditions are unpredictable, and that safety is always the paramount concern on any Antarctic voyage. For this reason, Antarctica21 reserves the right



to change the itinerary described due to weather conditions or other factors beyond Antarctica21's control without consulting the participants.

Baggage and Baggage Allowance

We recommend that clients avoid expensive designer luggage that is easily damaged. We also strongly recommend that clients take out a luggage insurance policy that covers the cost of repairs or replacement in case their luggage is damaged. Due to the nature of the expedition, and as stated in our Terms and Conditions of Sale, Antarctica21 cannot be responsible for any damage to a customer's luggage.

Note that at certain points during the expedition you will be required to handle your own luggage.

Expedition Language

The official language of our expeditions is English. The voyage will take travelers to remote destinations where the interaction with our polar guides is essential. In the interest of safety and for the enjoyment of the experience we strongly recommend that travelers who do not understand English are accompanied by someone who does, such as a friend, a family member, or a Tour Leader.

Meet a King Penguin
colony in South Georgia

© R. Moraga





TERMS & CONDITIONS

Antarctica21 (also referred to as ANTARCTICA XXI) is in business to help people realise their dream of visiting pristine and remote destinations, such as Antarctica among other places. Antarctica21 will endeavour and strive to do everything in its reasonable power to make the experience of traveling on its trips. To this end Antarctica21 strongly advises that all passengers carefully read these Terms and Conditions, as all rights and obligations between Antarctica21 and each passenger will be governed by these as herewith described.

Description of the Program

The program that Antarctica21 is offering to the participants is described in the brochure corresponding to each tour.

General Booking Terms

The following booking terms will apply in the case of individual bookings; in the case of charters (booking of the entire tour and vessel) and groups specific booking terms can be negotiated and agreed upon by separate contract.

- A deposit shall be paid to confirm a booking made 120 days prior to the departure date or earlier.
- The balance shall be paid no later than 120 days before the departure date.
- If a reservation is made less than 120 days prior to the departure date, the total cost of the tour is due at once.
- The Participation Form duly filled by the passenger must be received by Antarctica21 no later than 120 days prior to the departure date of the tour. In the case of a booking made less than 120 days prior to the departure date, the Participation Form must be received immediately after the confirmation of the reservation by Antarctica21. Once the Participation Form has been submitted, it is the passenger's responsibility to communicate to Antarctica21 any applicable changes or updates to the information provided.

Failure to comply with any of the above requirements entitles Antarctica21 to cancel the booking and withhold return of all payments received. The payment of a deposit or of any payment for a reservation on this tour, and the submission of the Participation Form, shall constitute consent to all the provisions contained herein. With this, the passenger understands and accepts all provisions without restriction, including their consequences, contained in Antarctica21's Terms and Conditions.

Payment, Cancellation and Refund Policies

The following payment, cancellation and refund policy will apply in the case of individual bookings; in the case of charters (booking of the entire tour and vessel) or group bookings specific payment, cancellation and refund terms can be negotiated and agreed upon by separate contract. In the case of cancellation of a booking, which must be done in writing by the passenger, the following terms will apply:

- Cancellation received up to 180 days prior to departure: there will be a full refund of the deposit received less a \$1000 USD per person processing fee that will be retained by Antarctica21.

- Cancellation received between 179 and 120 days prior to departure: there will be no refund of the deposit paid.
- Cancellation received between 119 and 90 days prior to departure: there will be a refund of 10% of the amount paid, provided that the final payment has been received.
- Cancellation received between 89 and 60 days prior to departure: there will be a refund of 7.5% of the amount paid, provided that the final payment has been received.
- Cancellation received between 59 and 30 days prior to departure: there will be a refund of 5% of the amount paid, provided that the final payment has been received.
- Cancellation received between 29 and the departure date: there will be no refund whatsoever.

Upon cancellation, the passenger releases the cancelled cabin and all rights over it to Antarctica21.

Antarctica21 reserves the right to cancel a tour prior to the scheduled date of departure for any reason whatsoever. The decision to cancel a tour is within the sole and absolute discretion of Antarctica21. In the event of such a cancellation, all monies received by Antarctica21 from the passenger or the passenger's booking agent for that tour will be refunded, including the deposit mentioned in the General Booking Terms. Antarctica21 shall not be liable for any special or consequential damages, whether known or unknown, direct or indirect, neither for any costs of air ticket, hotel or any other expenses that the passenger may have incurred in or will incur in, under any circumstances whatsoever.

Antarctica21 also reserves the right (in its sole and absolute discretion) to alter or omit any part of the itinerary with due notice to the passengers wherever practicable. Such rescheduling does not constitute a cancellation by Antarctica21. All reasonable efforts will be made by Antarctica21 to ensure that the passenger's travel objectives are met. Antarctica21 strongly recommends all passengers to purchase a travel cancellation and interruption insurance as protection against an unforeseen event which may force them to cancel their booking before departure or leave a tour while it is in progress. Antarctica21 also recommends purchasing insurance to cover risks associated with epidemic or pandemic events, such as Coronavirus, including, but are not limited to, denial of entry into the country or region of embarkation, denial of boarding following medical recommendation, quarantine requirements on shore or on board the ship, isolation following recommendation by health authorities due to suspected or confirmed infection, and any other plan disruption or complication related to epidemic or pandemic events. In the absence of insurance coverage, the passenger shall bear any financial costs associated with such events.

Prices

The prices of tours are indicated in U.S. dollars (USD). Prices quoted are based on tariffs, exchange rates, and fuel prices in effect at time of publication and are subject to change prior to departure. Substantial changes in

taxes, tariffs, exchange rates and fuel prices can increase the cost of expedition arrangements significantly. Antarctica21 reserves the right to alter prices or introduce surcharges accordingly, even when payment has already been received in full.

Responsibility

Antarctica21 is not responsible for any expenses incurred by the passenger or passenger's booking agents in preparing for the voyage, including, among other expenses, non-refundable or penalty-carrying airline tickets, special clothing, visa or passport fees or other expenses related directly or indirectly to the trip. A tight time-schedule connection with the trips organized by Antarctica21 is unwise. For this reason, Antarctica21 strongly suggests that a flexible air ticket be held for your journey home. In no case will Antarctica21 be responsible for any expense or penalty incurred by the passenger or passenger's booking agents deriving from a change in the start or end date of the tour.

Participants should understand that there are certain known and unknown hazards involved in expedition voyages, which they accept willingly and voluntarily at their own risk at the moment of forwarding the deposit. Antarctica21 will not be liable for any illness, injury or death sustained during a tour, nor will it be liable for any uninsured loss or damage of property of any participant, whether caused in whole or in part by the negligence of the owners, directors, agents, officers, employees, contractors or subcontractors of Antarctica21, or those acting as its agents.

Antarctica21 shall not be responsible for any injury to persons (whether or not resulting in death) or damage to property arising out of any act of war, terrorism, insurrection, revolt or other civil or military uprising, pandemics or epidemics, occurring in the countries of origin, destination or passage. Antarctica21 acts only as agent on behalf of shipping and transport companies, airlines, hotels, and other suppliers providing services that are included in the tour, and as such Antarctica21 will exercise every possible care. However, Antarctica21, its subsidiaries and/or associated agents shall not be held responsible for property loss or damage and/or any damages resulting from illness, personal injuries or death that may be sustained by reason of, or while engaged in, any tour whether due to the ownership, maintenance, use, operation or control of any air, sea or land carrier or any other conveyance used in carrying out these tours. Antarctica21 can assume no liability due to any cause whatsoever whether caused by failure or delay or other irregularity, acts or omissions occurring during a tour under which the means of transportation or other service provided thereby is offered or supplied by owners, operators or public carriers for whom Antarctica21 acts only as agent. The Passenger Contract in use by the carriers concerned (when issued) shall constitute the sole contract between the transportation companies and the purchaser of these tours and/or passage. By accepting Antarctica21's Terms and Conditions, the passenger also accepts without reservation the provisions contained in the Passenger Contract in use by the shipping and transport companies, airlines, hotels, and other suppliers providing services that are

included in the tour. Any restriction, delay, prohibition, cancellation and/or event or sequence of events that occur at the national or international level, and that are caused, directly or indirectly by epidemic or pandemic events, such as, for example, the Coronavirus, will be considered as a fortuitous event or force majeure for all legal purposes. Antarctica21 strongly urges participants to check with their insurance agent to make sure that they are adequately covered for all eventualities. In the case of a medical problem arising during the tour, including those related to pre-existing conditions, accidents, or supervening illnesses, whether suspected or confirmed, which results in costs for evacuation or repatriation, the responsibility for payment of these costs belongs solely to the passenger. Antarctica21 requires that such eventualities are covered by travel insurance. If not covered by travel insurance, the responsibility still remains with the passenger and Antarctica21 specifically declines any responsibility whatsoever.

Antarctica21's staff, agents and representatives, other than an Officer of Antarctica21, are not entitled to promise refunds for whatever reasons, and Antarctica21 will not be bound by any such oral or written promises.

Itinerary

Antarctica21 has the duty to advise passengers that all expeditions are subject to constantly changing weather conditions in the visited regions and that the safety and comfort of passengers and crew will never be put at risk by taking actions that may result in a disappointing end to a unique experience.

This is a voyage to a remote part of the world, and Antarctica21 reserves the right to change the itinerary described in the brochure due to weather conditions, availability of anchorages or landing sites, safety of the carrier and human lives, political conditions and other factors beyond Antarctica21's decision and control without consulting the participants. On any flight and/or sea operation, such operation will be carried out exclusively and absolutely according to the judgment of the Captain of the aircraft and/or the vessel, whose decision will be definite and will not be questioned by any party. It is understood that such decisions will be made in the best interests of all the passengers and with regard to the safety of the vessel and the aircraft. Participants have no right to any refund or other considerations in the event of these inevitable itinerary changes. If a flight included in the trip cannot take place due to unfavourable weather conditions or to any other reason that prevents the operation of the flight, either at point of origin and/or destination, Antarctica21 will apply the Contingency Plan corresponding to each voyage.

Mean of Conveyance, Accommodation, Infrastructure, and Services

Keeping in mind that safety is the paramount concern, Antarctica21 will make all reasonable efforts to carry out the itinerary detailed in the itinerary corresponding to each tour by using the means of conveyance, accommodation, infrastructure, and services arranged to this end. However, Antarctica21 reserves the right to use substitute means of conveyance, accommodation, infrastructure, and/or services in the case of unfavourable conditions or other factors that Antarctica21 considers convenient, either at point of origin and/or transit and/or destination.

The use of substitute means of conveyance, accommodation, infrastructure, and/or services will be carried out exclusively and absolutely according to Antarctica21's judgment. It is understood that such decision will be made to ensure the safety of air, land

and sea operations, accomplishing the itinerary of each tour, maintaining standards of service similar to the ones originally arranged, and in the best interests of all the passengers.

Participants have no right to any refund or other considerations in the event of using substitute means of conveyance, accommodation, infrastructure, and/or services.

Admittance

These tours are intended for persons in reasonably good health. By forwarding the deposit the passenger declares that he/she understands and accepts Antarctica21's admittance policy and does not have any physical or mental conditions or other condition or disability that can create a hazard to himself/herself or other participants. Admission to a trip organized by Antarctica21 is subject to the completion of a trip participation form, as established above in the General Booking Terms. By submitting the Participation Form to Antarctica21, the passenger:

- Understands and accepts the requirements contained in the Participation Form.
- Declares under his/her sole and unique responsibility that the information delivered in the form is true, complete, and updated to the time of travel and that he/she complies with all sanitary requirements and is fit and fully able to participate in the voyage, is able to take care of himself/herself during the voyage and will not be an obstacle for the enjoyment of the trip for all other passengers;
- Accepts that the expedition will take him/her to remote areas without sophisticated medical facilities and understands that medical attention during the trip is limited to basic care, and that an emergency evacuation may be delayed;
- Undertakes to ensure that for the duration of the tour, including possible delays and postponements he/she will carry any and all necessary medications, and in sufficient quantity, to prevent, counter, or remedy any effects on his/her health that could be caused by his/her medical condition;
- Understands and accepts that Antarctica21 and its providers cannot, and will not, be held responsible or liable for any possible direct or indirect consequences related to his/her health condition during or after the program, and specifically for any food, beverage, ingredient, or any other substance that could cause a direct or indirect allergic reaction;
- Understands and accepts Antarctica21's policy regarding the acceptance of pregnant women on expedition voyages to remote destinations, such as Antarctica, as presented in the Participation Form, including Antarctica21's right to deny or limit participation should any information regarding a pregnancy be omitted in full or in part;
- Accepts that Antarctica21 reserves the right to request additional information regarding his/her health, physical suitability and compliance with sanitary requirements, such as vaccinations, in order to evaluate his/her admission to the journey.

Antarctica21 welcomes on its tours children 12 years of age and older, provided that they comply with the requirements applicable to all passengers and that an adult taking full responsibility of the minor accompanies them.

Regardless of the above, Antarctica21 reserves the right to exclude a passenger from part or all of the tour, should the passenger be considered by Antarctica21 to be not physically able or prepared or the passenger's health condition is not considered suitable to participate

safely. Antarctica21's decision to deny participation to a passenger in any expedition will be made at its sole and absolute discretion. Should a passenger's application for participation in a tour be justifiably declined by Antarctica21 prior to the scheduled date of departure of the tour, Antarctica21 will refund all payments received from the client less an administrative fee equivalent to 75% of the Deposit paid only if the Participation Form is received by Antarctica21 at least 120 days prior to the departure date, and this will be the limit of Antarctica21's liability. Antarctica21 shall not be liable for any special or consequential damages, whether known or unknown, direct or indirect, under any circumstances whatsoever.

During the trip, Antarctica21's leaders and guides will do their utmost to ensure that any problems are solved for the benefit of the group and the voyage as a whole. Passengers accept Antarctica21's authority (whether it be a Captain, Expedition Leader, Operations Manager or Field Guide) to make decisions affecting the group or individuals. For instance, an individual may be denied participation in a tour, or his/her participation in certain activities may be denied or restricted by an Antarctica21 leader, if that individual's health is at risk, if an illegal act is committed, or if his/her behaviour becomes detrimental to the safety, enjoyment or wellbeing of the group. Should an Antarctica21 leader take such action, that person would not be entitled to any refund whatsoever. If the disturbing behaviour or damage (as described above) should occur, all costs resulting from this shall be charged to the passenger.

Optional Adventure Activities

Antarctica21 offers optional adventure activities during some of its voyages. Considering that environmental conditions are changeable and unpredictable during a voyage, Antarctica21 cannot guarantee that the experience will take place as described in its promotional material or that it will take place at any specific location along the itinerary.

To take part in an optional adventure activity, participants must be able to communicate in English, and must listen to and follow the instructions of the guide in charge. Participants who cannot understand the instructions must inform the guide in charge right away. At his or her discretion and for any reason whatsoever, the guide in charge can deny or interrupt an individual's participation in the activity. If participation is denied, Antarctica21 will refund the participant's money paid for the activity, without further obligation.

The group will meet with the guide in charge at the beginning of each outing for a briefing session. Before starting the activity, participants must perform a safety check to ensure that all assigned equipment is in good working order.

When considering participation in an optional adventure activity, before starting the voyage participants are expected to undergo a medical check-up to ensure they are fit to participate in the activity. It will be Antarctica21's assumption that participants have done so and that they will be advised against participation in an adventure activity should there be any health concerns. For safety reasons, the guide in charge of the activity may ask participants to perform a trial to test their skills and fitness level.

Like with all physical activities, when taking part in an optional adventure activity there is potential risk of personal injury. In signing up for an optional adventure activity, participants expressly assume the risks associated with the activity and release Antarctica21 and its representatives from liability and waive all claims.



Participants in optional adventure activities must ensure that their travel insurance policy covers the activity.

Specific Terms for Sea Kayaking

Sea kayaking is offered as a program including several outings during a journey. With safety in mind, Antarctica21 will strive to offer participants as many excursions as the weather and sea conditions will allow. If Antarctica21 is unable to provide participants with any excursion due to weather and sea conditions, or other reasons, Antarctica21 will refund in full the money paid for the program. If Antarctica21 is able to provide at least one excursion, no refund, partial or otherwise, of the money paid for the activity will be made.

The sea kayaking program offered by Antarctica21 is a group experience under the leadership and responsibility of an experienced Kayak Master. Participants will not be allowed to leave the ship on independent excursions, and only participants who are part of the group from the start of the program can take part in the activity. Participants who wish to skip an excursion, are welcome to do so. However, the assigned equipment and place in the group cannot be used by another person.

To take part in the kayaking program participants must have previous kayaking experience using a sea kayak with a spray skirt. They must also have experience with an emergency wet exit. Minimum age for participation is 16 years. To participate in the kayaking program guests need to be vaccinated against COVID-19.

Specific Terms for Hiking and Snowshoeing

Hiking and snowshoeing is offered as a one-off outing during a journey, on a group basis. To take part in

a hiking and snowshoeing excursion, participants do not need previous experience. However, hiking or snowshoeing can be a strenuous activity so the participant's level of physical fitness should be good. Minimum age for participation is 12 years.

Baggage

The passenger's baggage, including all his/her belongings, is under his/ her sole and exclusive care and responsibility. The passenger accepts that Antarctica21 shall have no liability for loss or damage howsoever caused. Antarctica21 strongly recommends to passengers to obtain insurance for all baggage and other personal property.

The passenger is not allowed to transport, nor bring or have aboard any firearms, flammable or hazardous items, controlled or prohibited substances or drugs, contraband or items prohibited by any country or port or airport to be visited, or any other item that is not admitted by the Passenger Contract of shipping and transport companies, airlines, hotels, and other suppliers providing services that are included in the tour.

Use of Personal Equipment

Antarctica21 does not allow the use of motorized or naturally powered equipment by passengers during its expeditions. This includes the use of unmanned aerial vehicles (drones), radio-controlled surface and/or underwater vehicles, kites, and all types of equipment that could result in contamination of the environment of the visited region or harm to its wildlife.

Use of Personal Data

Passengers' personal data collected by Antarctica21

are used exclusively to provide the services of the tour booked, and to manage the passenger's security, safety, and well-being during the tour. As necessary, data will be shared with third party service providers, such as transportation, accommodation, and insurance providers, who collaborate with Antarctica21 on the delivery of the tour. Data will also be shared with authorities as required by law, applicable regulation, or court orders.

Photography and Video

Passengers extend Antarctica21 permission to take their photograph and video during the voyage and authorize Antarctica21 to make use of such photographs and video for promotional purposes and to illustrate the trips organized by the company. Passengers who do not wish to be photographed or videotaped during the voyage must inform Antarctica21 in writing, prior to the voyage. Antarctica21 will not be held responsible for the usage of photographs and/or videos taken by third parties during the tour.

Law and Jurisdiction

This Agreement, its interpretation, and any dispute hereunder shall be governed by and construed in accordance with the laws and the jurisdiction of the Republic of Chile, with the only exception of the maritime cruise, which is ruled by specific provisions contained in the Cruise Contract. In case of any dispute, the Spanish text of Antarctica21's Terms and Conditions is applicable.

Antarctica21

Fly & Sail Expeditions



Headquarters

Seno Lautu s/n, Puerto Williams, Isla Navarino, Chile

Administration and Operations

O'Higgins 1170, Punta Arenas, Chile

Sales

Pedro de Valdivia Norte 0129, Office 202, Providencia,
Santiago, Chile

Reservations and Customer Service

+56 (2) 22318142

Toll free USA and Canada

1 (877) 994-2994

E-mail

sales@antarctica21.com

www.antarctica21.com

