



Antarctica21

introducing

THE AIR-CRUISE MODEL

Traveling to the White Continent

The Drake Passage is the body of water that separates Cape Horn, the last piece of land belonging to the American continent, and the South Shetland Islands located in Antarctica.

This is where the Antarctic, the Pacific and the Atlantic oceans meet, which makes this merging point one of the most turbulent waters on Earth.



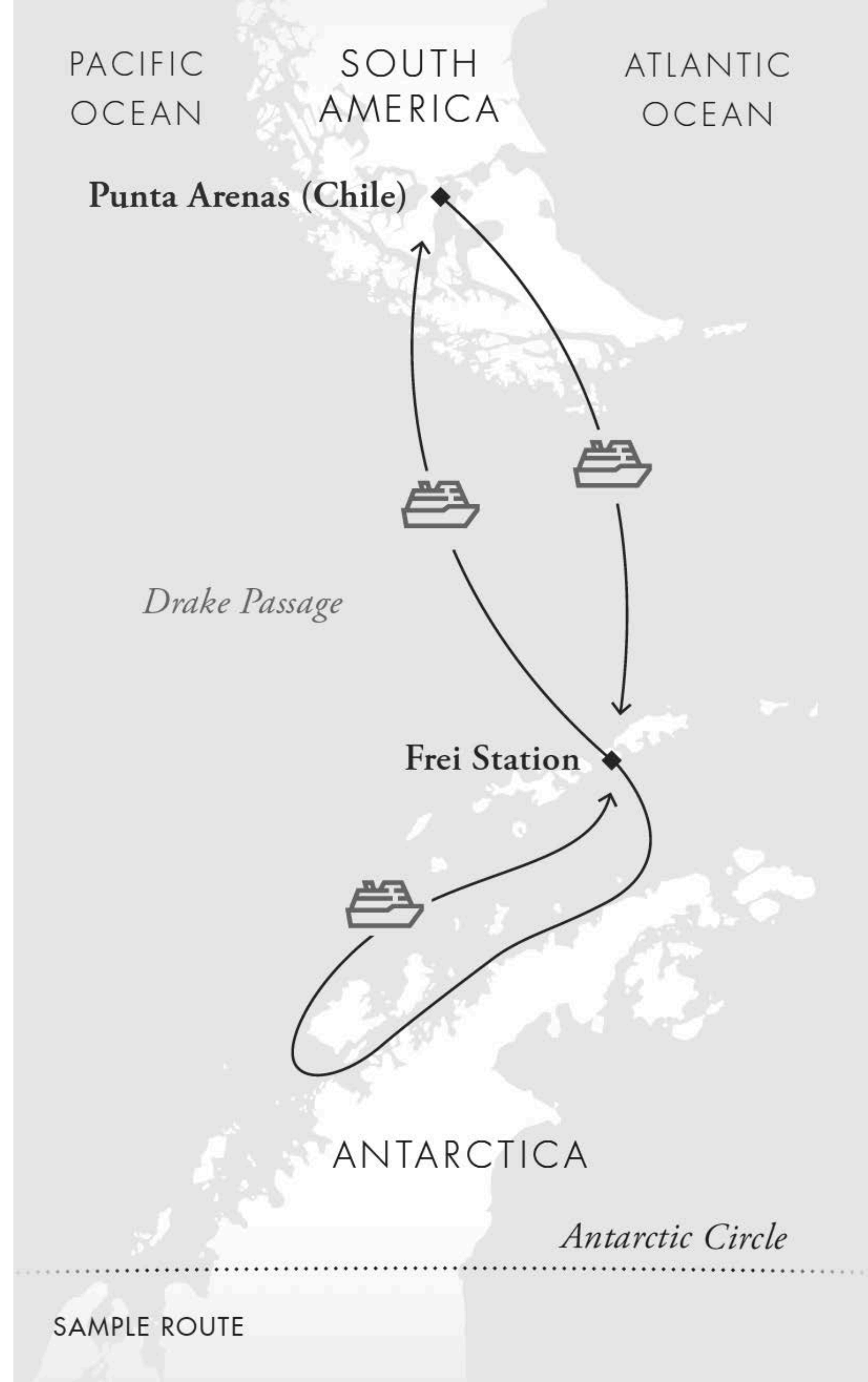
The traditional way from Ushuaia:

4 days crossing the Drake Passage

To reach the Antarctic Peninsula, travel operators sail the tempestuous Drake Passage. But this comes with inconvenience for the traveller.

- At least **50 hours South** to reach the Antarctic peninsula
- At least **50 hours North** to get back to South America
- Usually through rough seas, potentially causing sea sickness

[▶ Watch Drake Passage video](#)



Our Air-Cruise Model

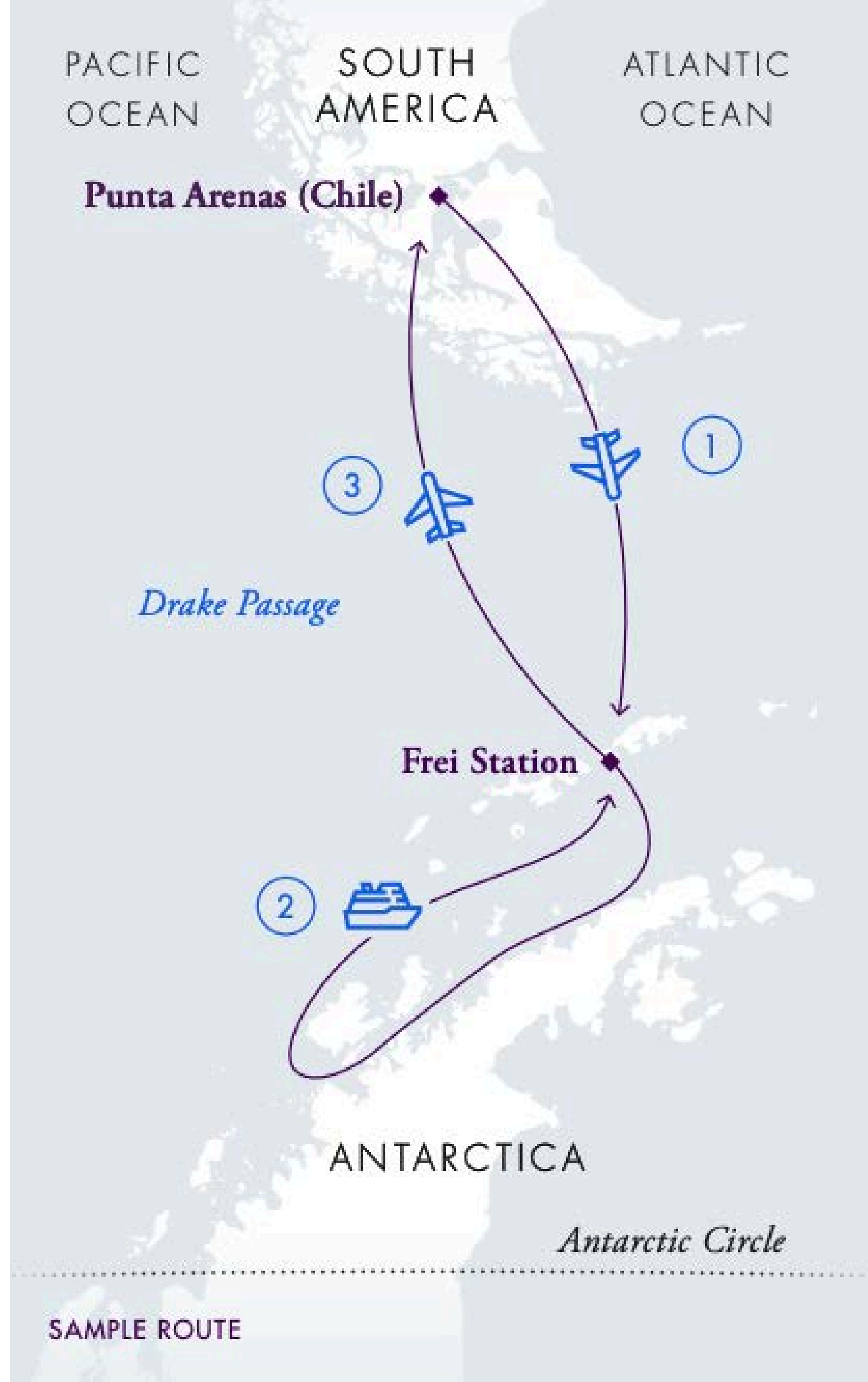
Only 2-hour flight, then sail in Antarctica

Antarctica21's innovative approach offers wilderness adventures that combine a 2-hour flight from Punta Arenas, located in the Chilean Patagonia, to the Antarctic peninsula, where our expedition vessel waits for the travelers to embark on an incredible journey.

- **Comfort:** Avoid the Drake Passage's storms
- **Speed:** Reach the Antarctic Peninsula faster
- **Size:** Small-ship, yacht-like experience

Highlight:

Antarctica21 is the world's first Antarctic air-cruise and has led the way since 2003.





Watch: Air-Cruise Video



Fly & Sail Expeditions
Experience the best of Antarctica

Comfort

Skip the stormy waters of the Drake Passage

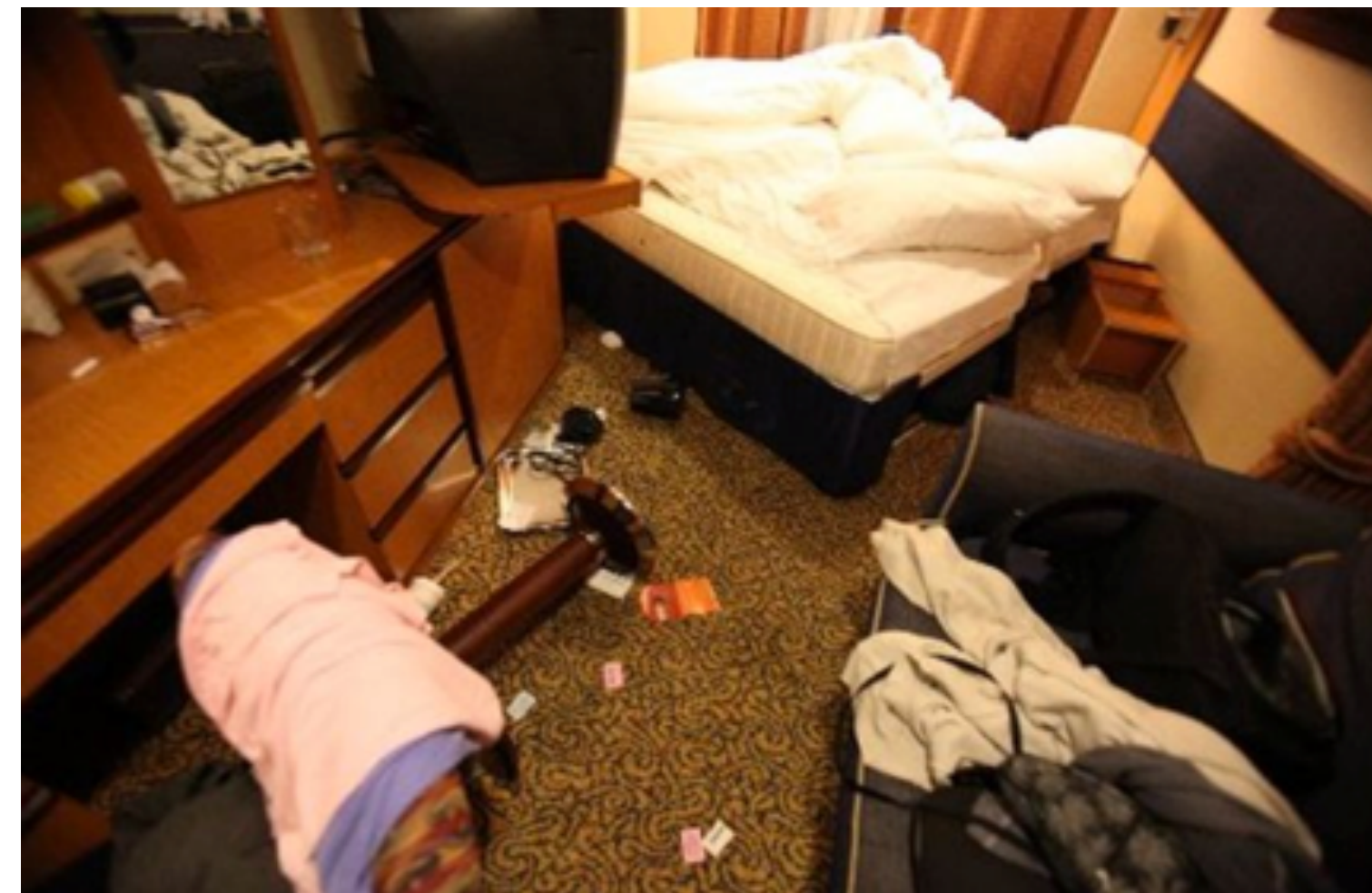
Rough seas are common in the Drake Passage. You don't have to experience sea-sickness and discomfort to reach Antarctica. With Antarctica21, you can simply fly over the Drake Passage.



Drake Passage



Sea Sickness



In a cabin, after crossing the Drake

Highlight:

Flying dishes and a queasy stomach not your thing? Choose comfort and fly.

Visit antarctica21.com

Speed

More time for exploration

Less time crossing the Drake Passage means more time for exploration in Antarctica, increasing your chances to see more wildlife diversity, to visit historic sites and to appreciate the breathtaking beauty of a preserved environment.



Highlight:

Torres del Paine National Park is located near Punta Arenas, the expedition's departure point.

Visit antarctica21.com

Size

Smaller groups, more time ashore

Our ships carry a maximum of 76 guests per voyage. For each landing, all passengers are allowed to disembark at once in our seven zodiacs. Disembarkation is efficient so you can enjoy more time ashore. Only one dedicated flight per departure!



Zodiac cruising



Snowshoeing



Kayaking

Highlights:

A pod of whales is visiting? The ship carries seven Zodiacs. All guests can enjoy the zodiac tours and landings at once. The Antarctic Treaty regulations set a limit of 100 persons ashore at a time.

Our fleet

Fly & Sail Expeditions

Our aircraft carries a maximum of 76 guests on each voyage. Antarctica21 operates exclusively with small ships which can explore further, where bigger ships can't.



BAE 146 / Avro RJ Aircraft



Ocean Nova



Magellan Explorer

Highlight:


Magellan Explorer is the world's first ship purpose-built for Antarctic Air-Cruises. She welcomed her first passengers during the 2019-20 season.

A wide-angle landscape photograph showing a vast, snow-covered mountain range in the background under a clear blue sky. In the foreground, a calm blue body of water stretches across the frame. In the lower-left corner, the dorsal fin and back of an orca are visible as it swims. The overall scene is serene and majestic.

Start an expedition
to Planet Earth

See the world
like never before





Live a powerful
experience

Plan your trip of a lifetime



Contact

Your questions are welcome

For further information and inquiries, you can contact our Reservation and Customer Service.

Tel: +56 (2) 2231 8142

Toll free USA and Canada: 1 (877) 994-2994

Email: sales@antarctica21.com

Our working hours:

Monday to Friday

From 8:30 am to 6:00 pm (UTC/GTM -3)

