

ANTARCTIC AND SUB-ANTARCTIC SEA VOYAGES

2023 · 24
SEASON



Tierra del Fuego (Ushuaia) | Cape Horn |
The Falkland Islands (Islas Malvinas) |
South Georgia | Antarctic Peninsula

Antarctica21
Fly & Sail Expeditions




ANTARCTIC PENINSULA & SOUTH SHETLAND ISLANDS



SUMMARY

4	Discover Antarctica, Cape Horn & the Southern Ocean	17	DATES & PRICES	28	PLANNING YOUR TRIP
5	Traveling on our Small Expedition Ships	18	Dates & Prices	29	Arrival & Departure Details
6	Our Company	20	Inclusions & Exclusions	30	Flight & Hotel Packages
7	ITINERARIES	21	EXPERIENCES & ADVENTURES	31	Packing for Your Trip
8	Ushuaia, Cape Horn & Falklands (Malvinas)	22	Explorers House: Antarctica21's Expedition Center	32	Useful Tips
9	Falklands (Malvinas) & South Georgia	23	The Antarctica21 Expedition Experience	33	Important Trip Details
10	Falklands (Malvinas), South Georgia & Antarctica	24	Sea Kayaking		
11	Antarctic Small Ship Expedition	25	Hiking & Snowshoeing in Antarctica		
12	VESSELS	26	Life on Board		
13	Magellan Explorer	27	Education Program		
15	Ocean Nova				

A full moon hangs in a pale, lavender-hued sky above a rugged, dark rock formation. The foreground shows patches of snow and ice on a dark, rocky terrain, with a body of water visible at the bottom. The overall scene is serene and majestic, capturing the raw beauty of an Antarctic environment.

Travel with Antarctica21
for a transformative,
once-in-a-lifetime experience

DISCOVER ANTARCTICA, CAPE HORN & THE SOUTHERN OCEAN



Cape Horn

This remote island at the tip of South America is a rare destination for the adventurous traveler. A visit here is the stuff of legends.

The Southern Ocean

The remote islands of the Southern Ocean are magical and wild places. In the Falklands Islands (Islas Malvinas), see peaceful bays rich in wildlife and learn about daily life of the people who make this remote outpost of British culture their home. In South Georgia, be amazed by sharp snowy peaks that jut out of the sea and take in some of the largest wildlife colonies in the world.

Antarctica

A land that holds 90% of Earth's ice, Antarctica stuns visitors with its awe-inspiring beauty. See peaceful bays dotted with colossal icebergs; cruise along deep fjords and see massive glaciers.

Adventure

Feel the spray of seawater on your cheeks as you cruise in a Zodiac boat to shore. Follow in the footsteps of early explorers as you hike with Antarctica21. Join our optional Sea Kayaking and Hiking & Snowshoeing programs in Antarctica.

Wildlife

Penguins, whales, seals, and seabirds congregate in the Southern Ocean during the austral summer. Present in large numbers, you will move along in their world, finding endless inspiration for photographs.

Memories

Setting foot on these distant lands is a privilege and an honor. You will bring home unforgettable tales, and your journey will arouse the curiosity and admiration of your friends and family.

TRAVELING ON OUR SMALL EXPEDITION SHIPS

Our Antarctic and Sub-Antarctic sea voyages are high-end wilderness adventures, not just cruises. Your home away from home, our small ships allow you to explore remote and beautiful lands in comfort.

Small Ship Access

Feeling more like private yachts than cruise ships, our small expedition vessels give you privileged access to Antarctica and the Southern Ocean, taking you where larger ships cannot. With fewer passengers, disembarkation is fast and efficient, so you spend more time exploring, not waiting.

Unparalleled Value

Your expedition will be led by an expert team of at least 12 polar guides. Our sea voyages have one of the highest staff-to-traveler ratios in the industry and offer an extensive list of trip inclusions for you to enjoy. Our rates start at only \$4,995 USD per person based on double occupancy, making these wilderness expeditions ones of extraordinary value.

KEY BENEFITS

↔ **Size:** Enjoy a small-ship, yacht-like experience

🕒 **Speed:** Efficient disembarkation

💰 **Value:** The best value and the most affordable prices



© A. Afrika

OUR COMPANY



Antarctica21 was founded in 2003 by adventurers who believed there was a better way to travel to Antarctica. Since then, our company has been providing quick, intimate access to Antarctica and beyond. This season our company celebrates 20 years of successful operation.



Our Style and Philosophy

Antarctica21 is a boutique specialist focused on the design and delivery of adventurous yet comfortable small-scale expeditions. We aim to offer guests the perfect balance between active exploration and high-quality hospitality.

Our Team

International Antarctic pilots, experienced sea captains, expert polar guides, academics, and seasoned travel professionals create the Antarctica21 experience. With passion, creativity, and dedicated teamwork, each expedition is handcrafted, unique, and personal.

Commitment

Antarctica21 is the leader in this fast-growing segment of Antarctic tourism, constantly developing and innovating its programs and operations. As a member of the International Association of Antarctica Tour Operators (IAATO), and a CarbonNeutral® certified company, we consider every detail of our planning and operations, working to reduce our environmental impact.



ITINERARIES



USHUAIA, CAPE HORN & FALKLANDS (MALVINAS)

8 DAYS / 7 NIGHTS

Itinerary

- A chance to visit Cape Horn
- The Falkland Islands (Islas Malvinas)
- Combines perfectly with a visit to Patagonia

Day 1 / Ushuaia, Embarkation

Your journey begins at the pier in Ushuaia, Argentina, with boarding between 19:00 hr. and 20:00 hr. Board your ship and sail along the Beagle Channel towards Puerto Williams, Chile, the southernmost town in the world, where the ship will clear formalities to approach Cape Horn.

Day 2 / Cape Horn

After an overnight crossing of Nassau Bay, wake up in full view of the legendary Cape Horn! Weather permitting, board a Zodiac and be one of the few privileged adventurers to step foot on this famous and rarely visited island. Sail and explore the area in depth before setting course north towards the Falkland Islands.

Day 3 / At Sea

As we sail through the South Atlantic en route to the Falkland Islands (Islas Malvinas), you can attend an engaging program of lectures and presentations. In the company of expert guides, watch for bird and marine life from the lounge or the outside decks. You may spot magnificent seabirds, such as albatrosses and petrels, as well as different species of whales.

Day 4 / West Falklands (south)

Ruggedly beautiful and remote, places such as New Island, Weddell Island, or West Point are located at the extreme west of the Falklands' archipelago. See dramatic cliffs contrast with sheltered sandy bays and natural harbors. These areas host a large concentration of wildlife with lots of diversity. Some of the best wildlife experiences are just a short distance from the settlements.

Day 5 / West Falklands (north), Carcass & Saunders

Named after HMS Carcass, a vessel which visited in the late 18th century, the terrain here is varied with rocky ridges, steep cliffs, open plains, white sand beaches, and coves. Saunders is the second-largest offshore island and has very varied terrain, from rocky hills to sweeping shorelines. It is an important natural habitat for birds and offers exceptional wildlife viewing opportunities. All five breeding species of penguin can be spotted here along with black-browed albatross and many other birds.

Day 6 / The Falkland Sound

We cruise down the Falkland Sound, sightseeing its rugged and untouched landscapes and immerse ourselves in the past and recent history of the islands. You visit settlements and meet the locals, getting to know the culture of farming families. As we stop at sites that were active battlefields during the 1982 conflict, our historians introduce us to regional geopolitics.

Day 7 / Port Stanley

Join our expedition team on guided walking tours in town or to Gipsy Cove. Or take the option to explore on your own and absorb the atmosphere, grabbing lunch at the local pub, visiting the maritime museum, the church, hunting for souvenirs, or walking down Ross Road, paying tribute at the war memorials at the waterfront.

Day 8 / Disembarkation

Transfer to the airport at Mt. Pleasant will be provided from the ship according to the scheduled flight.



OPERATED ON

Magellan Explorer

* Note: Small-group day tours and half-day tours can be purchased on board the ship to visit Volunteer Point (by 4x4 vehicle or helicopter), battlefield tours (by 4x4 vehicle), and others. Options will be presented on board.



FALKLANDS (MALVINAS) & SOUTH GEORGIA

15 DAYS / 14 NIGHTS

Itinerary

- A wilderness experience in the Southern Ocean
- The Falkland Islands (Islas Malvinas)
- In-depth visit to South Georgia

Day 1 / Port Stanley, Embarkation

Pick up at the airport in Port Stanley, town visit, and embarkation.

Day 2 / Saunders Island, Carcass Island

During a morning visit to Saunders Island, we enjoy the long white-sand beach. A wilderness experience, the main attractions there are rockhopper penguins, nesting black-browed albatross, and sub-Antarctic gentoo penguins. In the afternoon we visit Carcass Island. There is an option for an easy hike to the settlement, bird watching, and a typical Falklands tea experience.

Day 3 / New Island, Weddell Island

We visit New Island, a classic West Falklands experience, with albatross & penguin colonies. Depending on local conditions, in the afternoon we could visit Weddell Island.

Day 4 / Bleaker Island

Morning landing at Bleaker Island, a natural reserve with a famous bird area featuring a large variety of birds. In the afternoon, we head to South Georgia.

Day 5-6 / At Sea

As we sail towards South Georgia, attend an engaging program of lectures and presentations. In the company of expert guides, watch for wildlife from the lounge or from the outside decks. You may spot magnificent seabirds, such as albatrosses and petrels, as well as different species of whales.

Day 7 / Elsehul Bay

Depending on sea conditions over the previous days, arrival is planned for the afternoon. Provided we receive approval from the South Georgia government, we plan to do an evening Zodiac cruise at Elsehul Bay.

Day 8 / Grytviken, Fortuna Bay

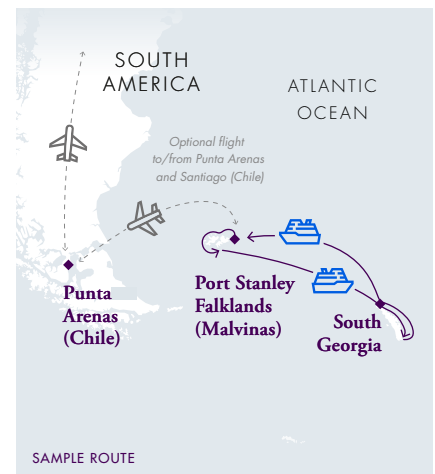
Our first landing is at Grytviken. We clear Customs and then visit a historical site with the South Georgia Museum and Ernest Shackleton's grave.



In the afternoon, we land at Fortuna Bay / Stromness to see king penguins. Here we learn more about Shackleton and his expedition, and there is also an optional 2-3 hour "Shackleton walk."

Day 9 / Gold Harbour, Cooper Bay

In the morning, we plan a landing at Gold Harbour, a spectacular location with king penguins, elephant seals, and hanging glaciers. There are also sooty albatrosses here. In the afternoon and on a Zodiac cruise, we visit Cooper Bay to see macaroni penguins.



Day 10 / St Andrews Bay, Ocean Harbour

St Andrews Bay is the destination of our morning excursion. We see the largest king penguin colony, and elephant seal bulls. In the afternoon, we plan a Zodiac cruise and landing at Ocean Harbour. The highlights here are a shipwreck and the remains of the whaling industry.

Day 11 / Prion Island, Salisbury Plain

In the morning, we plan to visit Prion Island to see the nesting wandering albatross. In the afternoon, we head to Salisbury Plain for more king penguins and stunning landscapes.

Day 12-14 / At Sea

As we make our way back to the Falkland Islands (Islas Malvinas), our program of lectures and presentations continues.

Day 15 / Port Stanley, Disembarkation

Upon arrival at Port Stanley, we disembark and transfer to the airport for the departing flight.

 **OPERATED ON**
Magellan Explorer

FALKLANDS (MALVINAS), SOUTH GEORGIA & ANTARCTICA

20 DAYS / 19 NIGHTS

Itinerary

- A wilderness experience in the Southern Ocean
- The Falkland Islands (Islas Malvinas)
- Visit South Georgia
- Explore Antarctica

Day 1 / Port Stanley, embarkation

Pick up at the airport in Port Stanley, town visit, and embarkation.

Day 2 / Saunders Island, Carcass Island

We enjoy the long white-sand beach during a morning visit to Saunders Island. A wilderness experience, the main attractions are rockhopper penguins, nesting black-browed albatross, and sub-Antarctic gentoo penguins. In the afternoon, we visit Carcass Island. There is an option for an easy hike to the settlement, bird watching, and a typical Falklands tea experience.

Day 3 / Bleaker Island

In the morning, we will land at Bleaker Island, a natural reserve with a famous area featuring a large variety of birds. In the afternoon, we head to South Georgia.

Day 4-5 / At Sea

Day 6 / Elsehul Bay

Depending on sea conditions over the previous days, arrival is planned for the afternoon. Provided we receive approval from the South Georgia government, we plan to do an evening Zodiac cruise at Elsehul Bay.

Day 7 / Grytviken, Fortuna Bay / Stromness

Our first landing is at Grytviken. We clear Customs and then visit the historical site with the South Georgia Museum and Ernest Shackleton's grave. In the afternoon, we land at Fortuna Bay / Stromness to see king penguins. Here we learn more about Shackleton and his expedition, and there is also an optional 2-3 hour "Shackleton walk."

Day 8 / Gold Harbour, Cooper Bay

In the morning, we plan a landing at Gold Harbour, a spectacular location with king penguins, elephant seals, and hanging glaciers. There are also sooty albatrosses here. In the afternoon and on a Zodiac cruise, we visit Cooper Bay to see macaroni penguins.

Day 9 / St Andrews Bay, Ocean Harbour

St Andrews Bay is the destination of our morning excursion. We see the largest king penguin colony and elephant seal bulls. In the afternoon, we plan a Zodiac cruise and landing at Ocean Harbour. The highlights here are a shipwreck and the remains of the whaling industry.

Day 10 / Prion Island, Salisbury Plain

In the morning, we plan to visit Prion Island to see the nesting wandering albatross. In the afternoon, we head to Salisbury Plain for more king penguins and stunning landscapes.

Day 11-12 / At sea

Day 13 / Elephant Island

In the afternoon, we will see Elephant Island. While a landing here is very unlikely, we will see the island from the ship or, if sea conditions allow, from a zodiac.

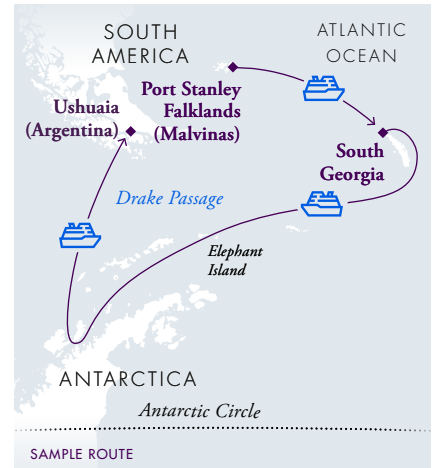
Day 14-17 / Antarctic Peninsula, South Shetland Islands

Cruise along the Antarctic Peninsula and among the South Shetland Islands, visiting sites in the Antarctic Sound and the Gerlache Strait. The voyage may include visits to sites such as Gourdin Island, Brown Bluff, Half Moon Island, Deception Island, Wilhelmina Bay, the Lemaire Channel, Cuverville Island, the Melchior Islands, or other magnificent places.

Day 18-19 / At sea

Day 20 / Ushuaia

Arrival in Ushuaia and disembarkation.



 OPERATED ON

Magellan Explorer

ANTARCTIC SMALL SHIP EXPEDITION

10 DAYS / 9 NIGHTS

Itinerary

- Visit the Seventh Continent
- See an abundance of marine mammals
- An affordable Antarctic experience

Day 1 / Ushuaia, Embarkation

Your journey begins in Ushuaia, Argentina. Board Magellan Explorer and sail along the Beagle Channel towards Antarctica.

Important note: Boarding in Ushuaia is exclusively between 15:00 hr. and 16:00 hr. At 16:00 hr. boarding will close. Please be on time. Keep your passport on hand and allow enough time to clear port security and to reach the vessel.

Day 2-3 / Crossing the Drake Passage

Sail towards Antarctica across the famous passage named in honor of Sir Francis Drake, the great 16th-century British explorer. As you sail en route to the South Shetland Islands, attend an engaging program of lectures and presentations. In the company of expert guides, watch for wildlife from the glass-enclosed lounge or the outside decks. You may spot magnificent sea birds, such as albatrosses and petrels, as well as different species of whales on their way south to Antarctica. After crossing the Antarctic Convergence, the environment changes noticeably. Keep your camera ready, as this is the time to watch for the first icebergs and the sight of Antarctic land.

Day 4-7 / Exploring Antarctica

Cruise between the South Shetland Islands and the western coast of the Antarctic Peninsula, sailing along ice-filled fjords and among spectacular icebergs while enjoying the company of sea birds, penguins, seals, and whales. Each day, disembark by Zodiac boat and explore the landscape together with expert polar guides. Enjoy spectacular vistas from the glass-enclosed lounge from the ship while sharing your daily adventures with fellow guests.

No journey is the same as flexibility is the key to success in Antarctica. The Expedition Team sets the voyage route to take advantage of the ever-changing opportunities provided by nature, crafting a unique and extraordinary

experience each time. While the exact itinerary changes with each expedition, you will explore several locations that offer the best possible overview of the varied Antarctic environment. Your voyage may include visits to sites such as Paulet Island, Hope Bay, Port Lockroy, Petermann Island, Paradise Bay, Deception Island, the Lemaire Channel, or many other magnificent places. Our adventure will be very active, with several daily landings and cruises in Zodiac boats, lectures, and a very enjoyable time on board.

Departure from Antarctica will be in the afternoon or evening of Day 8, depending on weather conditions.

Day 8-9 / Sailing back to South America

Return to South America with a northbound crossing of the Drake Passage. Relax and take the time to watch for wildlife from the bridge or outside decks, and participate in the presentations offered on Antarctic topics in the lounge.

Day 10 / Ushuaia, Disembarkation

The program ends upon arrival at the port in Ushuaia.



 OPERATED ON

Magellan Explorer
Ocean Nova





VESSELS

MAGELLAN EXPLORER

Innovative Technology / Modern Design

Magellan Explorer is a modern expedition vessel custom-built for our Antarctic air-cruises. The ship was constructed in Chile to the latest Polar Code specifications and launched in 2019.

For our air-cruises, Magellan Explorer has seven categories of accommodation, including dedicated single cabins. All cabins, except Porthole Cabins, feature private balconies. All double cabins, except two, have twin beds, which can be configured as a king-size bed. All cabins feature a wardrobe, individually controlled heating system, a sitting area, and a private bathroom with a shower.

The ship features a glass-enclosed observation lounge and presentation room with state-of-the-art audio-visual equipment, a spacious and stylish dining room, a well-stocked bar, a library, a meeting room, a gym, a sauna, and a medical clinic. The forward-facing observation deck leads to the ship's bow, which is accessible to guests to offer proximity to marine wildlife. The ship has a fleet of 10 Zodiac boats that are well suited for disembarking and wildlife watching.

The fitness center aboard Magellan Explorer has been designed and built by the professionals at Anytime Fitness, the world's only fitness company with boutique gyms on all seven continents. For more information, see anytimefitness.com.

Cabins

Category	Average size	Details
Single Cabin	210 sq. ft. 19 sq. m	Cabin with sitting area and balcony
Grand Suite	480 sq. ft. 44 sq. m	Two-room suite with sitting room, balcony and bedroom
Penthouse Suite	360 sq. ft. 33 sq. m	Two-room suite with sitting room, balcony and bedroom
Deluxe Veranda Cabin	240 sq. ft. 22 sq. m	Cabin with sitting area and balcony
Veranda Cabin	210 sq. ft. 19 sq. m	Cabin with sitting area and balcony
Porthole Cabin	200 sq. ft. 18 sq. m	Cabin with sitting area and porthole
Triple Suite	480 sq. ft. 44 sq. m	Suite with two bedrooms, balcony, and sitting area

Specifications

Passengers:
96 maximum

Expedition Staff & Crew:
60

Lifeboats:
2, fully enclosed, capacity of 160 (in addition to 8 life rafts, capacity of 160)

Length:
90.7 m

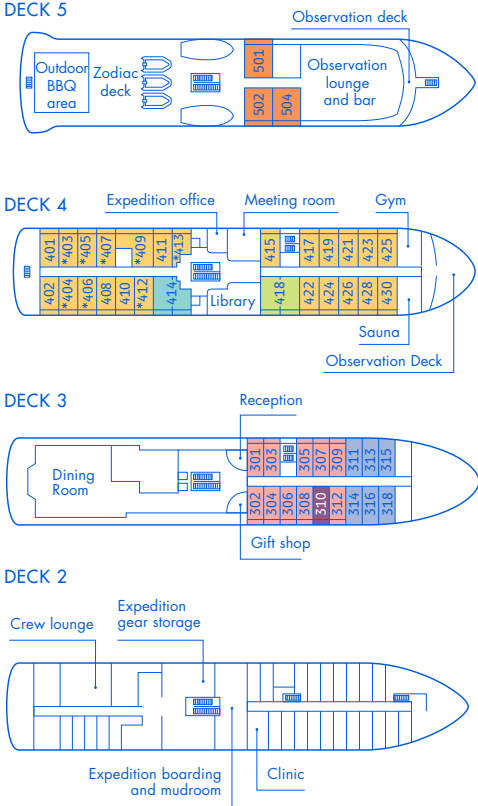
Breadth:
16.2 m

Draft:
4.3 m

Propulsion:
Diesel engines, 3,440 kW

Ice Class:
LR PC6

Cruising Speed:
14 knots in open water



* Only available with queen-size bed





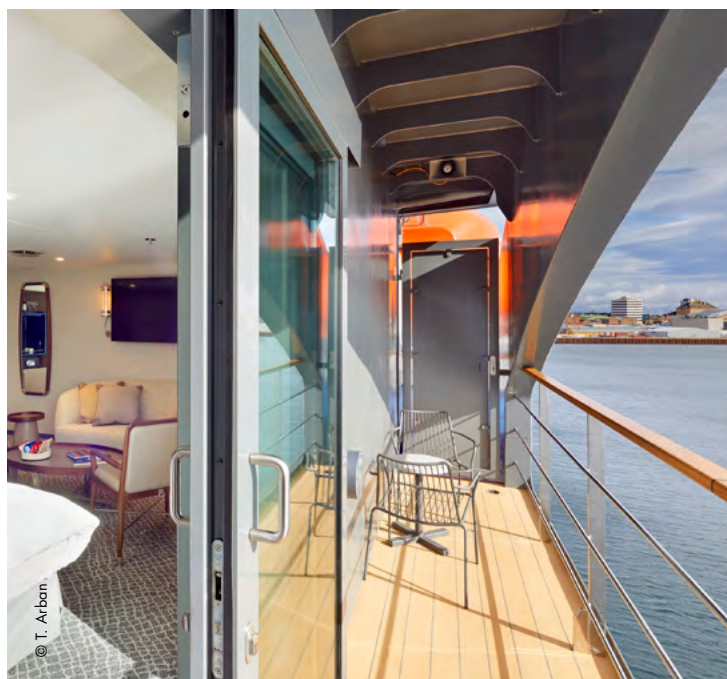
© M. Edward Harris



© T. Arban



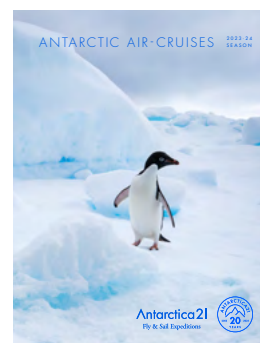
© T. Arban



© T. Arban



ANTARCTICA21 BROCHURES



For a complete copy of our 2023/2024 Antarctica Air-Cruise brochure or our Sea Voyage brochure, please send a request to sales@antarctica21.com.

OCEAN NOVA

Strong and Mighty / Active Adventure

Ocean Nova is a sturdy and nimble expedition vessel. This ship was built in Denmark in 1992 to sail the ice-choked waters of Greenland. It has an ice-strengthened hull that is ideally suited for expedition travel in Antarctica. Fully renovated in 2006, the ship has benefitted from annual upgrades and improvements since then.

Ocean Nova has a capacity for up to 71 guests accommodated in comfortable outside cabins. The ship offers three categories of accommodation: dedicated Single Cabins, Twin Cabins, and Triple Cabins. All cabins feature a picture window, a writing desk with a chair, a wardrobe, an individually controlled heating system, and a private bathroom with a shower.

In addition to a glass-enclosed observation lounge and a presentation room, Ocean Nova also has a spacious dining room, a bar, a library, a small gym, and an infirmary. The ship has a fleet of 7 Zodiac boats that are well suited for disembarking and wildlife watching.

Specifications

Passengers:
71 maximum

Expedition Staff & Crew:
46

Lifeboats:
2, fully enclosed, capacity of 110 (in addition to 4 life rafts, capacity of 100)

Length:
73.0 m

Breadth:
11.0 m

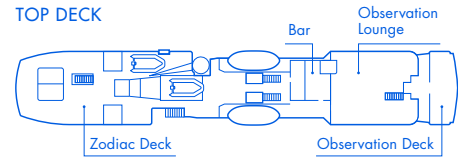
Draft:
3.7 m

Propulsion:
Diesel engines,
2,000-horsepower

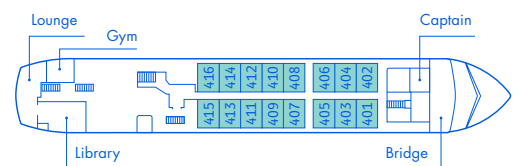
Ice Class:
1B, EO (Hull Ice 1A)

Cruising Speed:
12 knots in open water

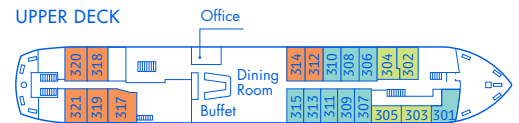
TOP DECK



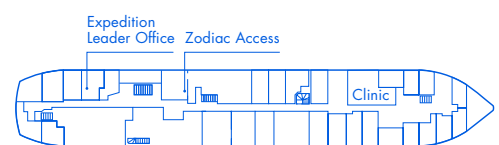
BRIDGE DECK



UPPER DECK

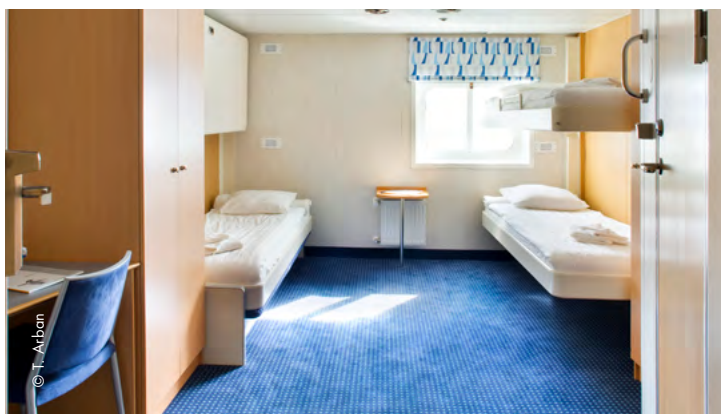


MAIN DECK



Cabins

Category	Average size	Details
Single Cabin	87 sq. ft. 8 sq. m	One lower single bed
Twin Cabin	106 sq. ft. 10 sq. m	Two lower beds
Triple Cabin	150 sq. ft. 14 sq. m	Two lower beds and one upper bed





A21 LOYALTY BENEFIT

The A21 Loyalty Benefit gives our returning travelers a 5% reduction on their next trip, including our new Antarctic & Sub-Antarctic Sea Voyages. The reduction applies to all repeat travel with Antarctica21. We hope to see you again!

DATES & PRICES



DATES & PRICES

Aboard Magellan Explorer

Code	Start	End	Days/ Nights	Itinerary	Prices (USD)								
					Triple	Porthole	Veranda	Deluxe Veranda	PH Suites	Grand Suite	Single	KAY	HS
MAG02-TF	September 23, 2023	September 30, 2023	8/7	Ushuaia, Cape Horn & Falklands (Malvinas)	\$ 7,995	\$ 4,995	\$ 5,595	\$ 5,995	\$ 6,995	\$ 11,995	\$ 9,995	\$ 995	—
MAG03-FS	September 30, 2023	October 14, 2023	15/14	Falklands (Malvinas) & South Georgia	\$ 15,895	\$ 9,995	\$ 11,795	\$ 11,995	\$ 13,995	\$ 23,995	\$ 21,821	\$ 995	—
MAG04-FS	October 14, 2023	October 28, 2023	15/14	Falklands (Malvinas) & South Georgia	\$ 15,895	\$ 9,995	\$ 11,795	\$ 11,995	\$ 13,995	\$ 23,995	\$ 21,821	\$ 995	—
MAG05-CH	October 28, 2023	November 16, 2023	20/19	Falklands (Malvinas), South Georgia & Antarctica	\$ 22,995	\$ 14,995	\$ 16,995	\$ 17,995	\$ 19,995	\$ 25,795	\$ 29,995	\$ 995	Available
MAG25-SE	March 13, 2024	March 22, 2024	10/9	Antarctic Small Ship Expedition	\$ 10,995	\$ 6,595	\$ 7,495	\$ 7,995	\$ 8,595	\$ 15,395	\$ 12,895	\$ 995	Available
MAG26-SE	March 22, 2024	March 31, 2024	10/9	Antarctic Small Ship Expedition	\$ 10,995	\$ 6,595	\$ 7,495	\$ 7,995	\$ 8,595	\$ 15,395	\$ 12,895	\$ 995	Available



TERMS & CONDITIONS

For a complete list of Terms and Conditions visit www.antarctica21.com/termsconditions, including important details about the following points:

- [Booking Terms](#)
- [Payment, Cancellation and Refund Policies](#)
- [Responsibility](#)
- [Itinerary](#)
- [Admittance](#)
- [Optional Adventure Activities](#)
- [Baggage](#)
- [Law and Jurisdiction](#)

Aboard Ocean Nova

Code	Start	End	Days/ Nights	Itinerary	Prices (USD)				
					Triple Cabin	Twin Cabin	Single Cabin	KAY	HS
OCN01-SE	November 11, 2023	November 20, 2023	10/9	Antarctic Small Ship Expedition	\$ 6,595	\$ 7,795	\$ 9,995	\$ 895	Available
OCN02-SE	November 20, 2023	November 29, 2023	10/9	Antarctic Small Ship Expedition	\$ 6,595	\$ 7,795	\$ 9,995	\$ 895	Available
OCN19-SE	February 29, 2024	March 9, 2024	10/9	Antarctic Small Ship Expedition	\$ 6,595	\$ 7,795	\$ 9,995	\$ 895	Available

KAY = Sea Kayaking in Antarctica, the Falklands (Malvinas), and South Georgia. We recommend booking the Sea Kayaking program upon reservation of your sea voyage.

HS = Hiking and Snowshoeing in Antarctica. Available for booking on board the ship at \$85 per person, per excursion.

Note: Rates are per voyage and per person in US dollars based on the selected cabin and occupancy.

Deposit

An initial deposit of \$3,000 USD per person is required to book a cabin, except for the Ushuaia, Cape Horn and the Falklands (Malvinas) expedition and the Antarctic Small Ship expedition, where the deposit is \$1,500 USD per person.

The balance is due in full 120 days prior to departure. Payments can be made by wire transfer, PayPal, or by major credit card. Wire transfer costs are to be borne by the sender. PayPal and credit card payments are subject to a 2.7% fee (however, the 2.7% fee is not charged on the deposit).

Children

Children are admitted from the age of 12 years if accompanied by an adult who will take responsibility and sign a waiver.

Single Travelers

Single travelers can choose between:

- Booking a dedicated Single Cabin. No supplement is applied for single use of dedicated Single Cabins.
- Booking a Twin Cabin for single use. An 85% supplement will be added to the rate per person when booking in a limited number of Porthole and Veranda Cabins on Magellan Explorer and Twin Cabins on Ocean Nova. A 100% supplement applies when booking all other categories.
- Sharing a cabin with another passenger of the same gender. This is available on Magellan Explorer in Porthole and Veranda Cabins and on Ocean Nova in Twin Cabins. Antarctica21 will take care of finding the matching companion.

Note: Single travelers who use CPAP machines or other assistive devices, as well as those who have conditions that can be disrupting to others (loud snoring, sleepwalking, etc.), can only book their expedition in a Single Cabin or a Twin Cabin for single use. They cannot book on a twin-share basis.

Charters and Reservations by Groups

Full-ship charters and reservations made by and for groups of 8 travelers or more are subject to payment and cancellation conditions to be agreed upon by contract.

Cancellation

Cancellation of a reservation must be done in writing. The following terms will apply:

- Cancellation received up to 180 days prior to departure: there will be a full refund of the deposit received, less a \$1,000 USD per person processing fee that will be retained by Antarctica21.
- Cancellation received between 179 and 120 days prior to departure: there will be no refund of the deposit paid.
- Cancellation received between 119 and 90 days prior to departure: there will be a refund of 10% of the amount paid, provided that the final payment has been received.
- Cancellation received between 89 and 60 days prior to departure: there will be a refund of 7.5% of the amount paid, provided that the final payment has been received.
- Cancellation received between 59 and 30 days prior to departure: there will be a refund of 5% of the amount paid, provided that the final payment has been received.
- Cancellation received between 29 and the departure date: there will be no refund whatsoever.

Upon cancellation, the passenger releases the canceled cabin back to Antarctica21.

Antarctica21 strongly recommends all guests to protect their travel investment by purchasing a trip cancellation and interruption insurance policy as protection against unforeseen events.



In today's travel world, it's important to have more flexibility with your bookings. You can purchase one of our flexible booking packages and add it to your trip. For more details, please email sales@antarctica21.com



INCLUSIONS & EXCLUSIONS



© Antarctica21

Included in the Rate

- Comprehensive pre- and post-voyage information material.
- For guests visiting Punta Arenas, special access to Explorers House.
- Ship cruise as indicated in the itinerary corresponding to each expedition.
- Daily buffet breakfast and lunch on board ship offering a wide choice of dishes.
- Daily served dinner on board ship offering a choice of three main courses.
- Wine, beer, juice, and soft drinks served with lunch and dinner on board ship
- Coffee, tea, chocolate, cappuccino, water, and snacks on board the ship throughout the expedition.
- Loan of waterproof boots for landings.
- All guided shore excursions.
- Lectures and entertainment on board.
- Landing fees and IAATO passenger fee.

Not Included in the Rate

- Flights, accommodation, meals, excursions, and transfers other than those included in the itinerary corresponding to each voyage.
- Beverages purchased at the ship's bar.
- Personal travel insurance.
- Extra expenses (communication, laundry, souvenirs, etc.).
- Gratuities.
- Visas for Chile, Argentina, and/or the UK, passport expenses, and any arrival and/or departure tax, if applicable.

EXPERIENCES & ADVENTURES



EXPLORERS HOUSE

Antarctica21's Expedition Center

An expedition with Antarctica21 is an experience like no other and success depends on preparation.

When visiting Punta Arenas, Explorers House offers an exclusive facility where you can interact with our team, review checklists, and get answers to any questions you may have about your trip, so you will be ready and confident when you arrive to your ship.

Explorers House also functions as our own private club. It provides a modern environment where you can relax with a cup of coffee, review a wonderful collection of books, and get to know your travel companions as excitement over the upcoming adventure builds.

Explorers House was designed by renowned architects and was built using green building practices. It features a commercial solar panel system to produce electricity and heat.

Explorers House

Image for illustration purposes only.
Actual space and furniture may vary.



THE ANTARCTICA21 EXPEDITION EXPERIENCE



Mariano Curiel
Director of Expedition Operations

Mariano Curiel, Director of Expedition Operations, talks about the expedition experience in Antarctica and beyond.

What makes a trip an “expedition”?

The word expedition refers to a journey undertaken by a group of people with a particular purpose, such as exploration or research. With a lot of preparation and just as much flexibility, we lead expedition travelers to Antarctica and the sub-Antarctic islands to deepen their understanding of these remote and otherworldly places.

What surprises our travelers the most?

In my experience, the most significant impact comes from being exposed to such majestic expressions of nature. In the remote and extreme Antarctic environment, travelers see and feel things that go beyond what they know and are used to in their daily lives. It's the same planet but feels different. For many, it is a life-changing experience.

How do you put together the expedition team?

Members of our expedition team must be able to perform at the highest level in extreme conditions for extended periods of time. Our mission is to connect our guests to the places we explore. To become that link, the team not only needs hard technical skills, and experience, but empathy, which allows them to feel and understand the emotions of our guests. We focus on building diverse teams in terms of gender, nationality, skills, backgrounds, etc. Finally, we look for people who feel deep respect for the Antarctic environment. A team needs to be confident in their plans but ultimately humble to the forces of nature. It's a unique profile we look for.

We only run small-scale trips. How does that shape the experience?

It gives us several advantages. To begin with, the connection to the places we visit is qualitatively different: less noise, less distraction, a more intimate experience. Then, there is our flexibility: in extreme environments, the only guarantee is that there are no guarantees and plans will have to change. Our small scale affords us a lot of flexibility, which is a huge operational advantage. It results in better daily routines. But probably the most important point is that we can establish a personal connection with our guests. We speak with them, we listen, share, and find out what they are experiencing during their trip. That gives us a chance to adapt our plans so that our guests are not simply “passengers” but become active participants in their trip.



© M. Edward Harris

SEA KAYAKING



© M. Edward Harris

Experience Antarctica and sub-Antarctic destinations from the unique vantage point of a sea kayak. The majestic landscape, the icebergs, and the wildlife look different as you paddle quietly through the icy waters.

The Program

The sea kayaking program is an optional small-group experience limited to a maximum of 10 participants. The group enjoys multiple excursions throughout the voyage under the guidance and leadership of an experienced Kayak Master.

Every day in Antarctica, the Falklands (Malvinas), and South Georgia, your Kayak Master will work with the Expedition Team to look for the best kayaking opportunities based on suitable and safe weather conditions. A dedicated safety Zodiac will support the group. Each kayaking excursion will be approximately one and a half hours. The Kayak Master will strive to offer some time at the landing site so you can also explore on land.

To take part in the kayaking program, you must have previous experience and know how to swim. The minimum age for participation is 16 years, and space is limited.

For complete details, please review the “Sea Kayaking” document, which is available upon request.

Ocean Nova: \$ 895 USD per person

Magellan Explorer: \$ 995 USD per person

[Book at the time of reservation](#)

Notes: Sea Kayaking is offered as a full program of excursions delivered to the same group of participants. It is not possible to join individual, one-off kayaking excursions or to rotate participation among family members or groups of friends traveling together.

Payment of the sea kayaking participation fee is due at the time of reservation. In the case of cancellation 120 days or more prior to departure, Antarctica21 will refund 50% of the participation fee. In the case of cancellation 119 days or less prior to departure, there will be no refund.

HIKING & SNOWSHOEING IN ANTARCTICA

See more of the Antarctic landscape with our Hiking & Snowshoeing program. Excursion locations are selected for their scenic appeal and will provide unique vantage points for your photographs.

The Program

The Hiking & Snowshoeing program is an optional small-group experience offered on board the ship as a one-off excursion. A Hiking and Snowshoeing Guide leads the group.

Every day you are in Antarctica, the Hiking and Snowshoeing Guide will work with the Expedition Leader to look for the best hiking or snowshoeing opportunities within the trip's schedule, based on suitable and safe weather conditions. Each

excursion will be approximately one and a half hours in duration. Depending on the conditions of the terrain, some excursions may require the use of snowshoes and/or trekking poles, that Antarctica21 provides. Participants can select the excursions they want to join, paying a per-excursion fee. The activity can be booked and paid for on board the ship.

To take part in the Hiking & Snowshoeing program, you do not need previous experience. However, your level of physical fitness should be good. The minimum age for participation is 12 years.

Please review the “Hiking and Snowshoeing in Antarctica” document for full details, which is available upon request.

\$ 85 USD Per Person, Per Excursion
[Book On Board](#)

Note: The Hiking & Snowshoeing program is only offered in Antarctica.



© M. Edward Harris

LIFE ON BOARD

Sandra Walser, Lead Cruise Manager, talks about the experience aboard our expedition ships.

What is life like on an Antarctica21 ship?

The ship is our base, a welcoming place to return to after our excursions. Our goal is to make it feel like your home away from home. We deliver a boutique hospitality experience that is personal, comfortable, and flexible. You can enjoy the privacy of your cabin, or socialize in the lounge; find a space for quiet contemplation in the library, or you can join fellow travelers on deck. Our team interacts with guests throughout the journey, sharing their knowledge and keeping everyone briefed on the trip's progress.

What about the dining experience on board?

Onboard dining gives you a chance to get to know your travel companions and make new friends. With different sized tables and no pre-assigned seating, you can choose to sit privately or join a group; the choice is yours.

Our chefs care about flavor and detail. In the remoteness of Antarctica, they may surprise you with a fresh sprig of rosemary as decoration. All meals offer a variety of choices that appeal to many tastes, including several main courses and side dishes, salads, fruits, and pastries. Our waitstaff serves a full selection of drinks. Beers and premium Chilean wines are included with lunch and dinner. Depending on cruising conditions, a barbecue on deck may be offered.

What are Magellan Explorer and Ocean Nova like?

At Antarctica21, we pride ourselves on offering expert and welcoming service on board all our ships. You will enjoy an exciting expedition program and a comfortable hospitality experience:



© A.M. López

briefings, presentations, social time in the lounge, access to the bridge, and daily cabin service are offered during your trip. In all cabins, we provide a reusable water bottle, refreshing bath products, chocolates at turn down, and more.

Magellan Explorer is a new vessel, with a modern design. Nearly all cabins have a private balcony: you can wrap yourself in a blanket and sip a warm beverage as you enjoy views of Antarctica in complete privacy. Ocean Nova offers an informal base for adventurous travelers. The ship's strong hull and excellent maneuverability provide an exceptional expedition experience at a more affordable price.

No matter which ship you choose for your Antarctica expedition, our goal is to ensure that you enjoy a friendly atmosphere, comfortable cabins, and common areas with knowledgeable and helpful staff.



Sandra Walser
Lead Cruise Manager

EDUCATION PROGRAM

Antarctica21's education program is delivered under the banner of A21CONNECT, an overarching concept where education, experience, and science converge.

With A21CONNECT, opportunities for understanding and gaining knowledge are woven throughout your journey, with multiple touchpoints.

Our expedition team offers engaging presentations on board the ship and interpretation in the field. Additionally, there are several one-on-one moments throughout your journey, where conversations with team members build upon the experiences of the day, leading to contextualized



© S. Walser

understanding. Thanks to the small-scale of our operation, those moments frequently happen: in the lounge, in the dining room, on deck, during a Zodiac cruise, and on countless other opportunities. Finally, we offer interactive workshops where you can participate and learn: open discussions, photography workshops, citizen science programs that collect data in support of scientists around the world, and more.

Through A21CONNECT, Antarctica, a distant and mysterious region, is revealed in action.

Did you know? If you added up our expedition team members' total time spent in the polar regions, it would amount to over a century!

ANTARCTICA21 FOUNDATION

The Antarctica21 Foundation has been established in 2021 as a vehicle for participation in a variety of programs focused on Antarctica. With the support of Antarctica21, the foundation undertakes activities in support of science, art, conservation, and education, thereby contributing to the creation of Antarctic knowledge and to the transfer of that knowledge to wide segments of society.

Projects Under Development

Antarctic Time Tunnel

Located at Explorers House, it is a space that presents the natural and cultural history of Antarctica.

Onboard Science

A program that uses Antarctica21 ships as platforms for the collection of scientific data in Antarctica.

Photography book

An editorial project focused on the unique connection between Punta Arenas and Antarctica.

Green Energy

A pilot project to evaluate the possible use of green hydrogen as an energy source for Antarctic bases.

More information is available at fundaciona21.com



© J. Irish

PLANNING YOUR TRIP



ARRIVAL & DEPARTURE DETAILS

Review the important details below about arrival and departure for your expedition, and make your travel plans accordingly. Ask your booking agent for assistance as needed.

Ushuaia, Cape Horn & Falklands (Malvinas)

The Ushuaia, Cape Horn and Falklands (Malvinas) itinerary starts at the pier in Ushuaia, and boarding is between 19:00 hr. and 20:00 hr. Boarding will close at 20:00 hr. On the last day of the expedition, disembarkation in Port Stanley is planned in conjunction with the departing commercial flight to Punta Arenas/Santiago. Our team will transfer you to the airport in Port Stanley for the flight.

Falklands (Malvinas) & South Georgia

For the Falklands & South Georgia itinerary, boarding on Day 1 in Port Stanley is planned in conjunction with the arriving commercial flight from Santiago/Punta Arenas. Our team will welcome you at the airport in Port Stanley and transfer you to the ship for embarkation. On the last day of the expedition, disembarkation in Port Stanley is planned in conjunction with the departing commercial flight to Punta Arenas/Santiago. Our team will transfer you to the airport in Port Stanley for the flight.

Falklands (Malvinas), South Georgia & Antarctica

For the Falklands (Malvinas), South Georgia & Antarctica itinerary, boarding on Day 1 in Port Stanley is planned in conjunction with the arriving commercial flight from Santiago/Punta Arenas. Our team will welcome you at the airport in Port Stanley and transfer you to the ship for embarkation. On the last day of the expedition, disembarkation in Ushuaia is planned in the morning. However, delays are possible. Antarctica21 strongly suggests that any travel plans made for the last day of the expedition do not start until the late afternoon.

Antarctic Small Ship Expedition

The Antarctic Small Ship Expedition itinerary starts at the pier in Ushuaia, and boarding is between 15:00 hr. and 16:00 hr. At 16:00 hr., boarding will close. On the last day of the expedition, disembarkation in Ushuaia is planned in the morning. However, delays are possible. Antarctica21 strongly suggests that any travel plans made for the last day of the expedition do not start until the late afternoon.

Traveling to and from your Antarctic gateway

Flights between Ushuaia and Buenos Aires' Ezeiza international airport and Aeroparque domestic airport are available daily on a few airlines. Buenos Aires can easily be accessed with many international flights that land daily at Ezeiza international airport.

Flights to and from Port Stanley, in the Falkland Islands, are available through LATAM Airlines on Saturdays, departing from/to Santiago and from/to Punta Arenas, Chile. Many international airlines land daily at Santiago's Arturo Merino Benitez airport. Several airlines offer daily service between Santiago and Punta Arenas.

Overland transportation by bus between Ushuaia and Punta Arenas, a 12-hour journey, is also available.



© R. Eliseev

FLIGHT & HOTEL PACKAGES

For your convenience, on a request basis Antarctica21 can provide packages that include an airline ticket in economy class for the commercial flight from Santiago or Punta Arenas to Port Stanley, and/or return, and hotel accommodation in either Santiago or Punta Arenas. These packages are designed to facilitate your arrival to and departure from the Falklands (Malvinas).

Scheduled flights are operated on Saturdays by LATAM Airlines.

Please note that premium economy, business class, and first class services are not available.

Please request more details at the time of reservation.



PACKING FOR YOUR TRIP

Suggested Clothing

The average temperature in the Falkland Islands (Islas Malvinas) during the time of our visit is in the 5 - 10°C (40 - 50 °F) range. The average temperature in South Georgia and the Antarctic Peninsula area during the time of our visit is about 0°C (32°F), although sometimes it may feel a little lower because of the wind chill factor. For this reason, it is best to wear several layers of light, warm clothing. The suggested clothing for Antarctica and the sub-Antarctic regions is very similar to that recommended for skiing: thermal underwear, a couple of warm and wicking mid-layers, a windproof and waterproof jacket, plus pants as the outer layer. You will also need a hat, a scarf, waterproof and insulated gloves, and sunglasses with high UV protection. The pre-departure material provides further details. We also suggest packing comfortable clothes to wear on board, as well as rubber-soled shoes for walking around on the outside decks.



EXPEDITION JACKET

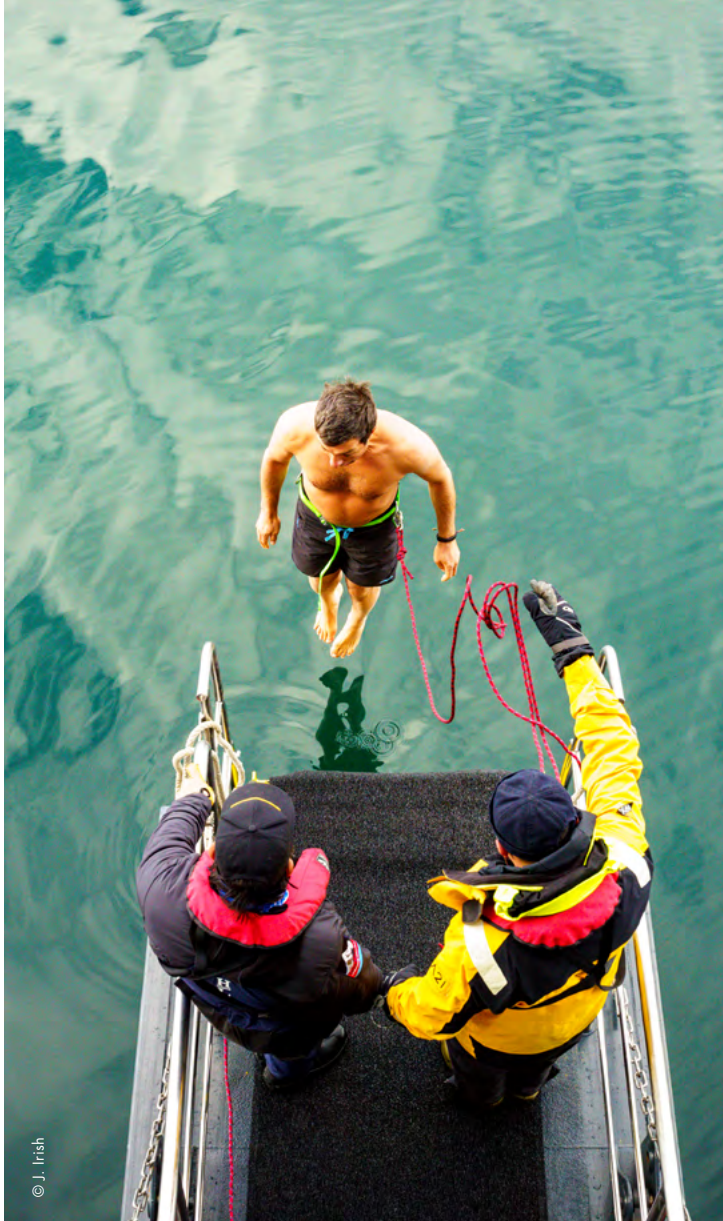
Our Signature Waterproof Expedition Jacket has been hand-selected for you as the perfect, technical outer shell for use on our expeditions.

The Antarctica21-branded BR2 Offshore Waterproof Jackets by MUSTO is breathable and features double cuffs, an adjustable hem, a double storm flap with a drainage channel over the zip, a high collar, and a roll away fluorescent hood. The sleeves are articulated to allow complete freedom of movement. The fleece-lined collar, hood, and pockets add warmth, while the prismatic reflectors provide extra visibility. The jacket is an outer shell to be worn over a few layers of warm clothing.

Only available in the Antarctica21 Gear Shop at www.antarctica21.com

Price: \$ 349 USD

Note: Jacket model and price subject to change. Please review the model and price at the time of purchase.



© J. Irish



IMPORTANT PRE-TRAVEL REMINDERS

- Submit your participation form 120 days prior to your trip
- Book flights according to the required arrival and departure times
- Purchase travel insurance, including medical evacuation and pandemic related coverage
- Review the current Travel Requirements on www.antarctica21.com/travel-requirements/
- Review the clothing and gear requirements
- Check the validity of your passport and obtain any required entry visas

USEFUL TIPS

Waterproof Boots

As most landings in Antarctica and the sub-Antarctic regions are “wet landings”, the best footwear is knee-high waterproof boots. You will not need to carry them with you since Antarctica21 will provide you with a pair of thermal rubber boots.

Face Protection

Good quality UV filtering sunglasses are essential. Glacier glasses have leather flaps at the sides to stop the light from passing through. Due to the high reflectance of UV radiation, you will also need good sunblock lotion for your face (protection factor 30 and above) and lip balm.

Photography

To see the wildlife, you should have a good pair of lightweight binoculars (the suggested magnification is 7x or 8x). If you are passionate about photography, do not forget a good zoom lens to shoot wildlife while avoiding close approaches. Also, take a good supply of memory cards and spare batteries with you since cold temperatures can reduce their life span. The recreational use of drones is not allowed during the expedition.

Visa & Passport Requirements

All travelers should check the entry requirements of the countries visited during their trip, based on their nationality. For trips that visit Argentina, Chile and the UK, the requirements of all countries should be considered. For trips that visit South Georgia, a passport is required for entry, and it is the only valid form of identification for travel.

Dietary Information

Requests regarding diets must be made on the Participation Form you receive after your booking confirmation. This information will be passed along to our staff so they can accommodate your needs while on your voyage. Note: due to the nature of our expeditions and the kitchens onboard the ships, Kosher and vegan meals cannot be accommodated.

IMPORTANT TRIP DETAILS



TERMS & CONDITIONS

For a complete list of Terms and Conditions visit
www.antarctica21.com/termsconditions

The Nature of Expedition Travel

Our expeditions are suitable for adventurous travelers who enjoy full mobility and reasonably good health. Expedition travel to Antarctica and the sub-Antarctic regions requires flexibility and adaptation to ever-changing circumstances.

Your Travel Companions

Antarctica21 offers its expeditions worldwide. Each year we welcome travelers from over 40 different countries. They may travel alone, as a family, or as part of a group. While some of your traveling companions may speak different languages and have different customs, they will share your passion for adventure and interest in the natural world.

Participation Form

Participants are required to fill out and submit an online Participation Form and return it to Antarctica21 at least 120 days prior to departure. Based on the medical information provided in the form, Antarctica21's Medical Director may request a medical certificate. All participants 75 years of age and older must submit a medical certificate.

Medical Insurance

Antarctica21 requires participants to be adequately covered by a travel insurance policy that covers aero-medical evacuation from any of your destinations as a result of a medical emergency during the trips, including emergencies related to pre-existing health conditions.

Cancellation Insurance

Antarctica21 strongly urges participants to be adequately covered by trip cancellation and interruption insurance.

Itinerary

Every effort will be made to adhere to the planned program. However, with this type of adventurous travel, changes to the itinerary may occur due to severe and changeable weather. We need to emphasize the fact that weather conditions are unpredictable, and safety is always the paramount concern on any Antarctic voyage. For this reason, Antarctica21 reserves the right to change the itinerary described due to weather conditions or other factors beyond Antarctica21's control without consulting the participants.

Baggage and Baggage Allowance

We recommend that clients avoid expensive designer luggage that is easily damaged. We also strongly recommend that clients take out a luggage insurance policy that covers the cost of repairs or replacement in case their luggage is damaged. Due to the nature of the expedition, and as stated in our Terms and Conditions of Sale, Antarctica21 cannot be responsible for any damage to a customer's luggage.

Note that at certain points during the expedition you will be required to handle your own luggage.

Expedition Language

The official language of our expeditions is English. The voyage will take travelers to remote destinations where interaction with our polar guides is essential. In the interest of safety and for the enjoyment of the experience, we strongly recommend that travelers who do not understand English be accompanied by someone who does, such as a friend, a family member, or a Tour Leader.



Antarctica21

Fly & Sail Expeditions



Headquarters

Seno Lautu s/n, Puerto Williams, Isla Navarino, Chile

Administration and Operations

O'Higgins 1170, Punta Arenas, Chile

Sales

Pedro de Valdivia Norte 0129, Office 202, Providencia,
Santiago, Chile

Reservations and Customer Service

+56 (2) 22318142

Toll free USA and Canada

1 (877) 994-2994

E-mail

sales@antarctica21.com

www.antarctica21.com

